



# City of Charlottesville City Council Design Approval

October 21, 2019



# Process/Schedule



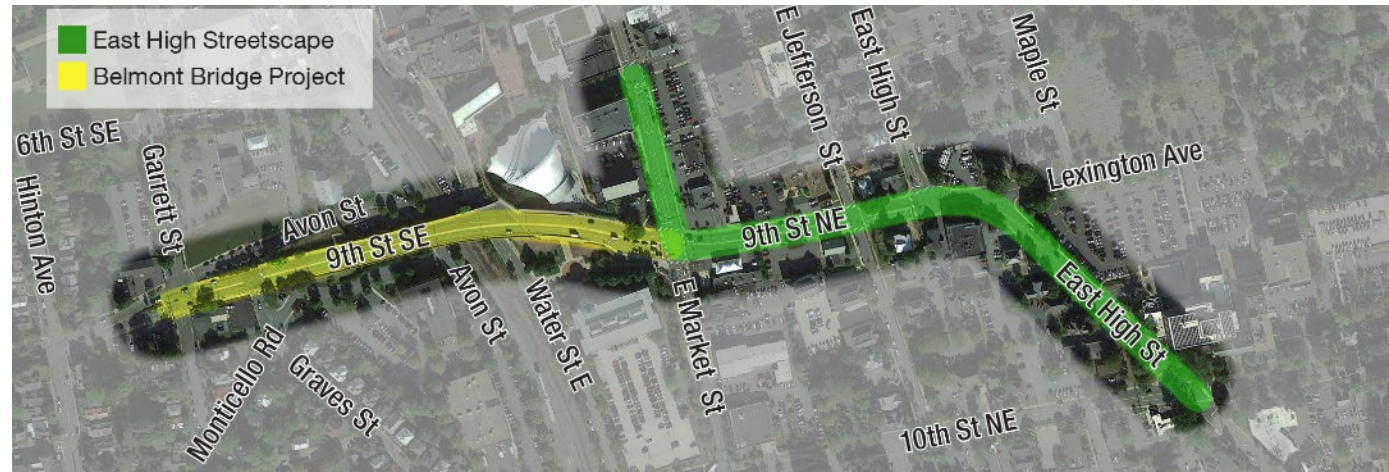
# Project Overview



- Funded in 2016 through
- Multimodal improvements including:
  - Wider sidewalks, bike lanes, landscaping, ADA and pedestrian improvements, wayfinding, and signal upgrades.
  - Evaluate undergrounding overhead utilities
- E. Market Street
  - From 7<sup>th</sup> Street to 9<sup>th</sup> Street
- 9<sup>th</sup> Street
  - From E. Market Street to E. High Street
- E. High Street
  - From 9<sup>th</sup> Street to 10<sup>th</sup> Street

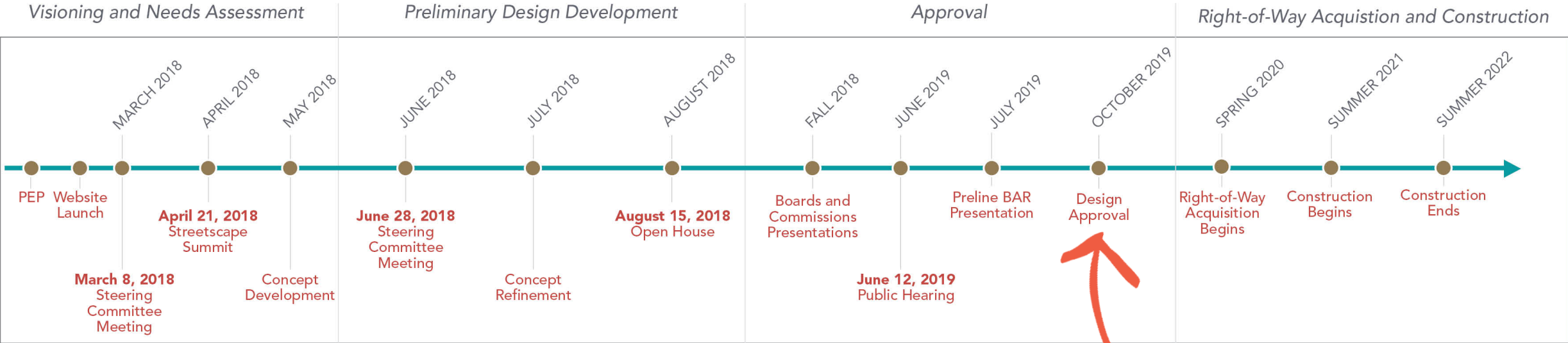


**Total Budget:** \$7.16 Million  
(Not including potential underground utility betterment)



<https://smartportal.virginiahb2.org/#/public/applications/2017/hb2/view/F1-0000000187-R01>

# Process/Schedule



We are here!

# Public Engagement Overview





# Visioning & Needs Assessment

As of October 2019



Steering Committee Meeting #1



17,500+

individual data points

EastHighStreetscape.org Website



1,000+

touch points

500+

written comments

Streetscape Summit



MetroQuest Survey



Steering Committee Meeting #2



Open House



Presentations to City Committees



Approval by Planning Commission



Conceptual Approval by City Council



Coordination with Active Developments



Prelim. Input from Board of Arch. Review



## Key Takeaways

- Overall, pedestrian facilities and multimodal mobility is a priority
- Desire to provide a safe and walkable street that enhances neighborhood connections
- Utilize design features and proposed amenities to enhance the overall environment for all users

# Vision & Needs Assessment

## *Common Themes and Key Takeaways*

- **Key Words** | safe, walkable/pedestrian-friendly, functional

- **Priorities**

1. Pedestrian Facilities
2. Landscaping
3. Bicycle Facilities
4. Traffic and Travel Speeds
5. Lighting



- **Challenges** | traffic volumes, limited space/competing priorities, Lexington and E. High intersection
- **Outcomes** | conformance to Comprehensive Plan, City Council concept approval



# Preliminary Design Development

## *Design Public Hearing – Key Themes & Takeaways*



46

attendees

30+

written comment  
forms or e-mails

### Key Takeaways

- Overall support of bicycle and pedestrian improvements
- Desire for planting palette enhancements including larger canopy trees
- Interest in how planned Tarleton Oaks development works with streetscape
- Support for conversion of existing overhead utilities to underground
- Concerns expressed regarding traffic
- Challenges with competing priorities in limited space and need for compromise





# Recommended Preliminary Design



**Project Location**

Charlotteville, Virginia

**North Arrow & Scale**

GRAPHIC SCALE IN FEET

0 10 20 30

**Legend**

Proposed Asphalt	Existing Right of Way
Proposed Sidewalk	Proposed Right of Way Line
Proposed Stormwater Best Management Practice (BMP)	Proposed Permanent Easement
Proposed Green Bike Pavement Marking	Proposed Temp. Construction Easement
Area Under Further Study	Proposed Curb
Proposed Trees	Proposed Pedestrian Signal
	Proposed Signal

**Contact Information**

Written comments may be sent by June, 22 2019 to:

Tim Motsch  
City of Charlottesville  
610 East Market Street  
P.O. Box 911  
Charlottesville, Va. 22902

E-mail comments may also be sent to:

[motscht@charlottesville.org](mailto:motscht@charlottesville.org)

Visit [www.EastHighStreetscape.org](http://www.EastHighStreetscape.org) for more information

East High Streetscape  
Charlottesville, Virginia

State Project: U000-104-298  
UPC 106480

These plans are unfinished and unapproved and are not to be used for any type of construction or the acquisition of right of way. Preliminary easements for utility relocations are approximate only and subject to change as project design is finalized.

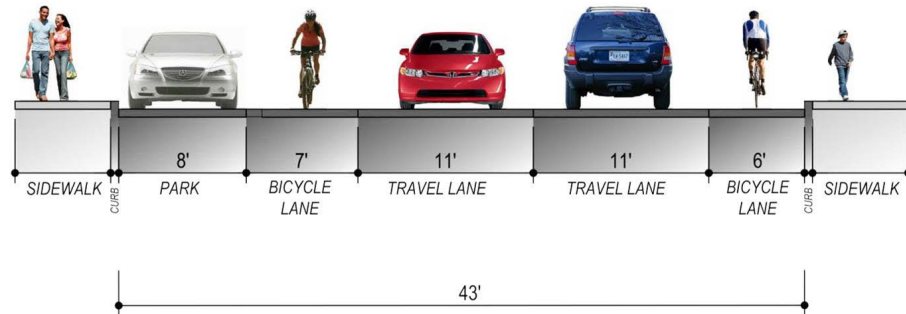
Imagery Courtesy of the Commonwealth of Virginia copyright 2018



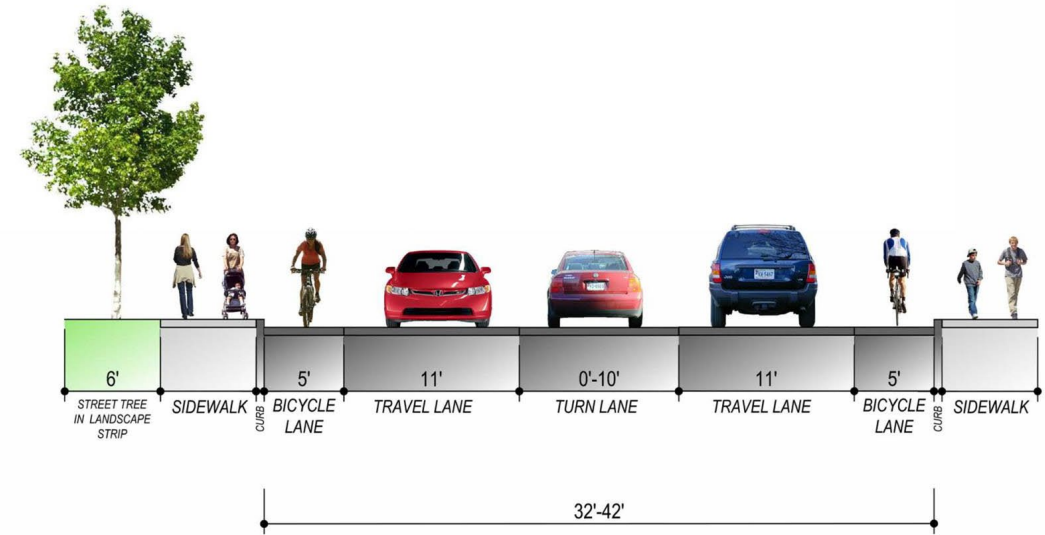


# Recommended Preliminary Design

## E. Market Street/9<sup>th</sup> Street



SECTION A - MARKET ST BETWEEN 8TH ST. AND 7TH ST.

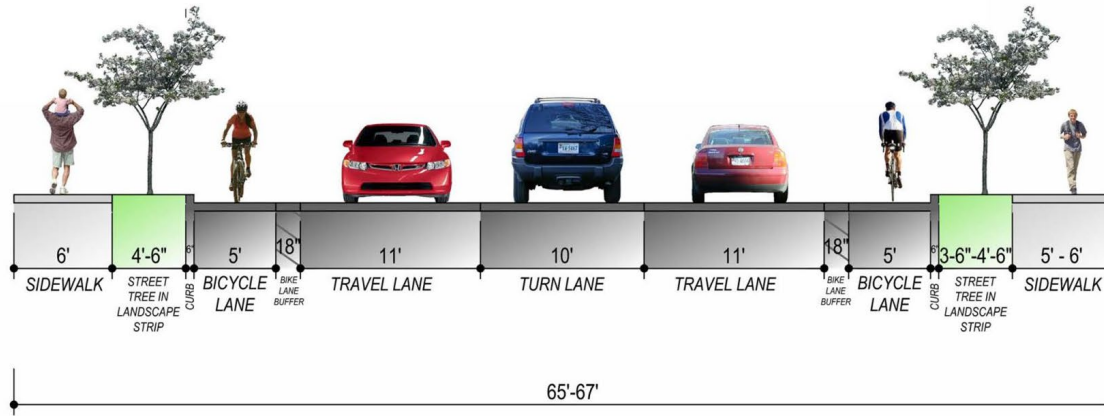


SECTION B - MARKET ST BETWEEN 8TH ST. AND 9TH ST.

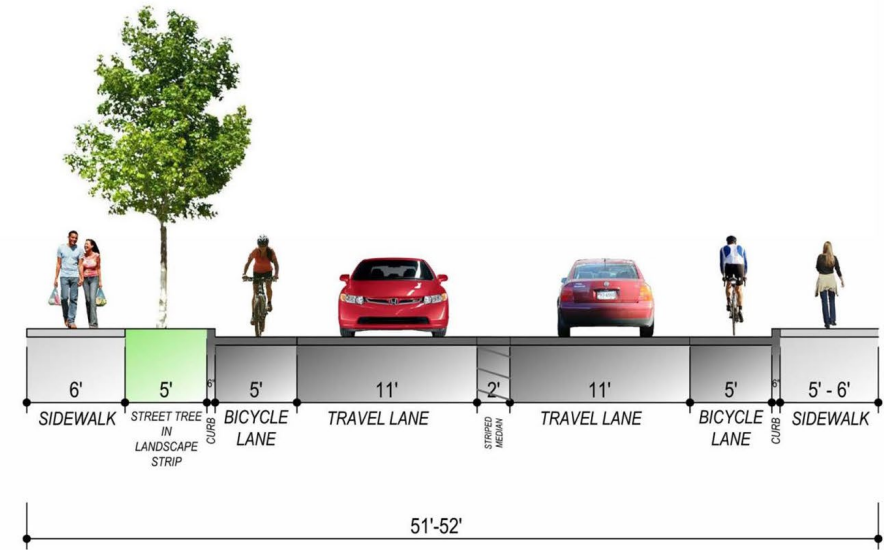


# Recommended Preliminary Design

## 9<sup>th</sup> Street NE/E. High Street



SECTION C - 9TH ST. BETWEEN MARKET ST. AND E. JEFFERSON ST.



SECTION D - EAST HIGH ST. BETWEEN 9 1/2 ST. AND CFA

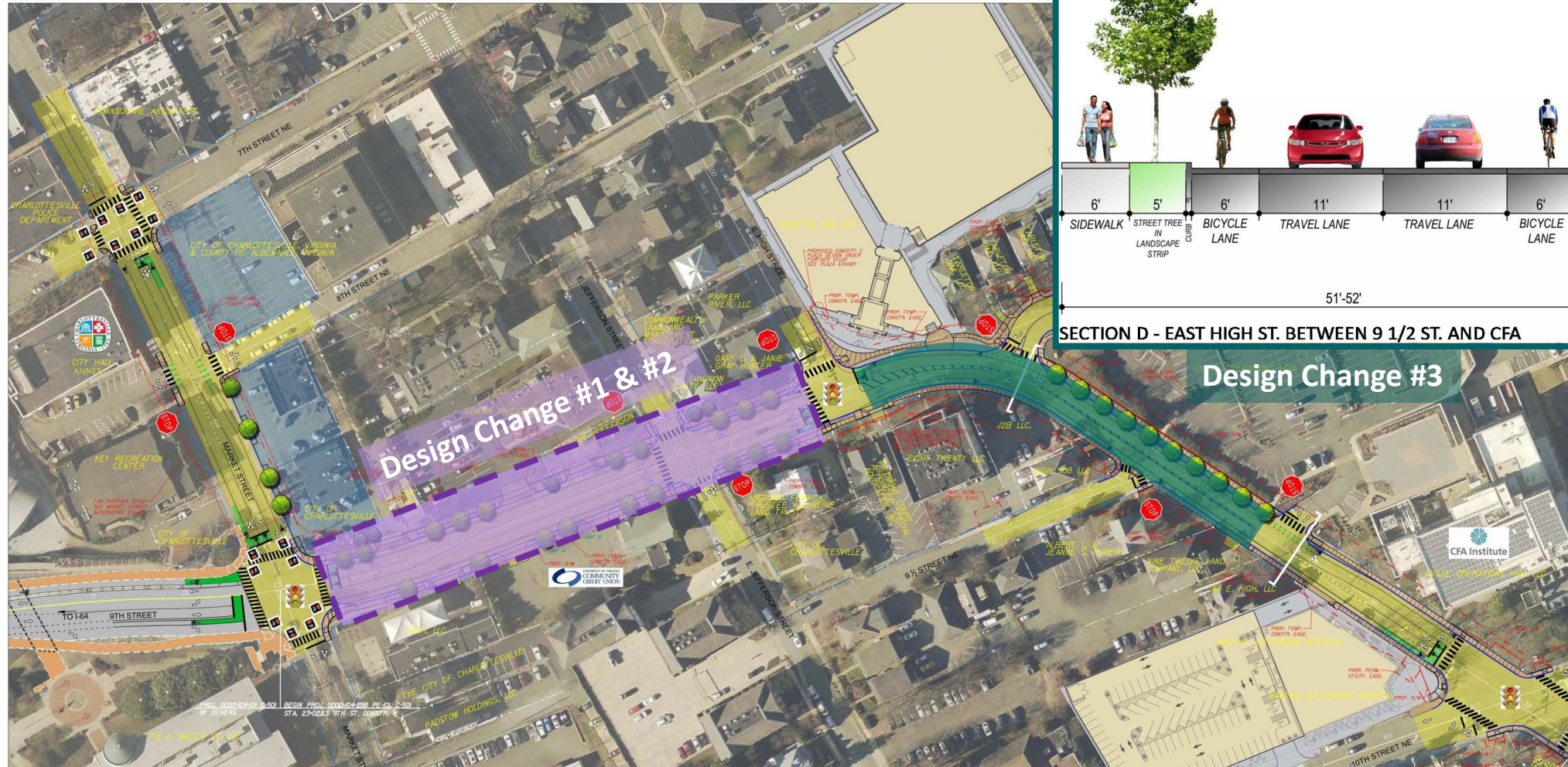


# **Recommended Design Changes Based on Public Hearing Comments**





# Design Changes Summary



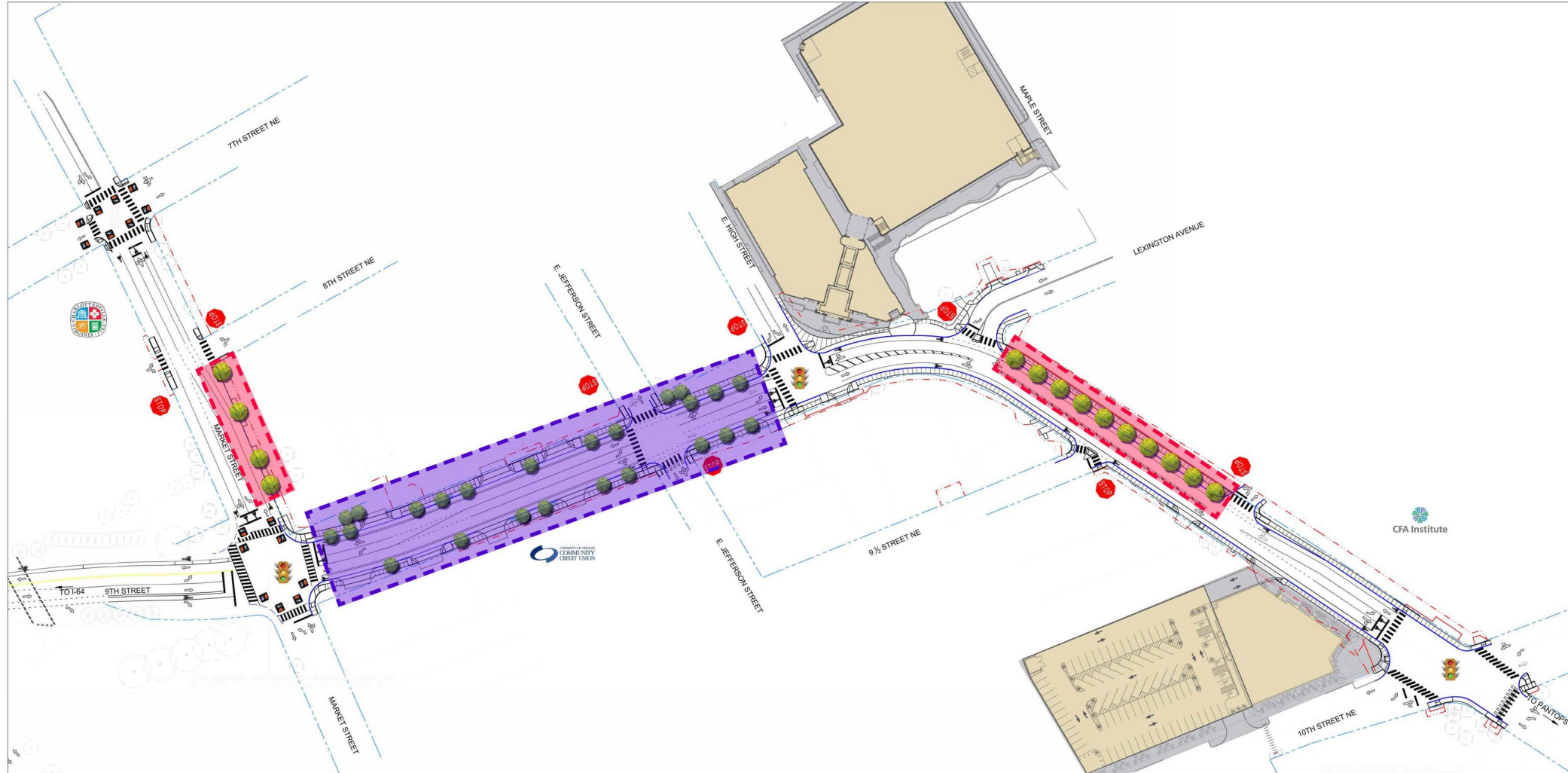


# Design Change #1 & #2 - Planting Palette Presented at Public Hearing

 Proposed Canopy Trees  
Potential Species:  
Ginkgo Tree (Male)  
*G. bilboa*  
American Elm 'Jefferson'  
*U. americana*  
'Armstrong' Red Maple  
*A. rubrum* 'Armstrong'  
London Plane Tree  
*P. x acerifolia*

 Proposed Understory Trees  
Potential Species:  
Flowering Dogwood  
*C. florida*  
Serviceberry (multi-stem)  
*A. grandiflora*  
Eastern Redbud  
*C. canadensis*  
River Birch  
*B. nigra* 'Heritage'

Note: Tree species  
selected are consistent  
with Charlottesville's  
Master Tree List



# Design Change #1 & #2 - Public Hearing Feedback on Planting



## Key Takeaways

- Encourage the use of native trees
- Consider pedestrian comfort and safety
- Desire for larger trees rather than understory

## • Priorities

1. Large trees for shade
2. Native tree varieties

## • Challenges

1. Adequate soil volume available for large trees
2. Overhead electric utilities (if not underground)



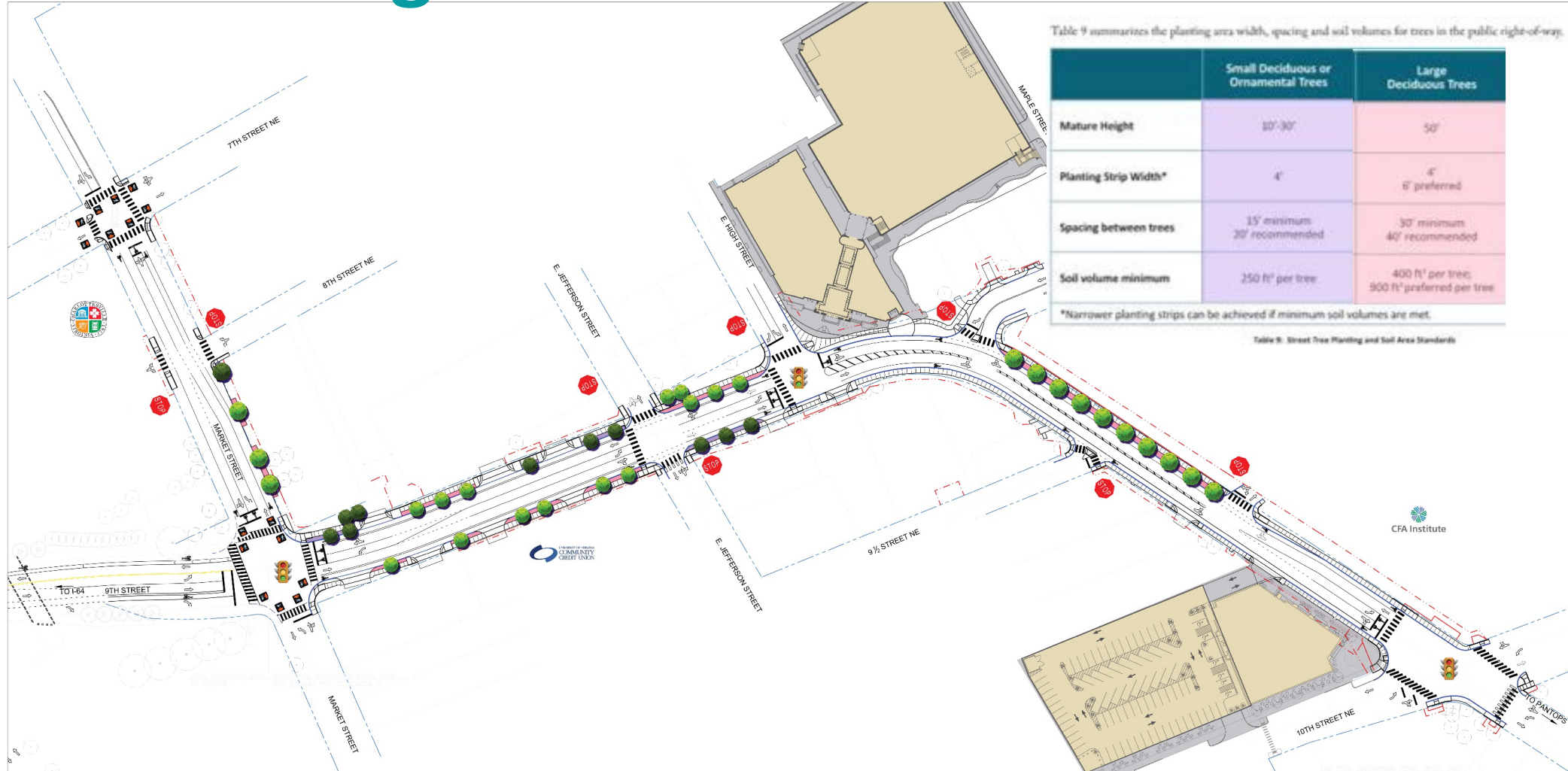


# Design Change #1 & #2 - Revised Planting Palette

- Proposed Canopy Trees  
Potential Species:  
Sweet Gum  
*L. styraciflua* 'Rotundiloba'  
Scarlet Oak  
*Q. coccinea*  
American Linden  
*T. americana*  
London Plane Tree  
*P. x acerifolia* 'Bloodgood'  
Willow Oak  
*Q. phellos* 'Hightower'

- Proposed Understory Trees  
Potential Species:  
Flowering Dogwood  
*C. florida*  
Serviceberry (multi-stem)  
*A. grandiflora*  
Eastern Redbud  
*C. canadensis*  
American Hornbeam  
*C. caroliniana*  
Winter King Hawthorn  
*C. viridis* 'Winter King'

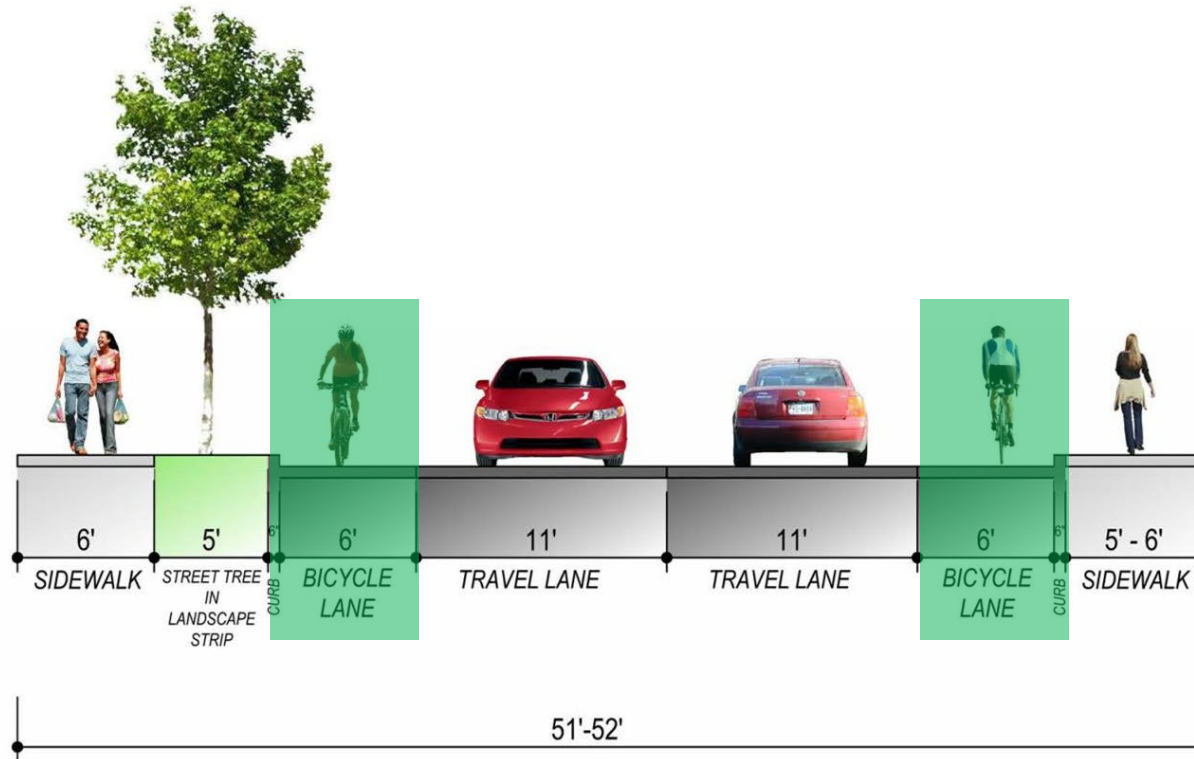
Note: Tree species selected are consistent with Charlottesville's Master Tree List





# Design Change #3

## E. High Street



1. Eliminate 2' wide striped median from E. High intersection to CFA Institute Entrance.
2. Widen proposed bicycle lane from 5' to 6'.

SECTION D - EAST HIGH ST. BETWEEN 9 1/2 ST. AND CFA

# Recommendation for Design Approval



# Recommendation

Approval of the major design features as shown at the Design Public Hearing with 3 changes as a result of public hearing comments:

- Replacement of understory trees with canopy trees along 9th Street between E. Market Street and Jefferson Avenue
- Adjustment of the planting pallet to provide more variety of species with a focus on native species
- Increased bike lane width to six feet (6') along 9th Street from E. High Street to the existing CFA Institute entrance.





# Thank You! Questions?

October 21, 2019

