



City of Charlottesville Board of Architectural Review

July 16, 2019



Process/Schedule



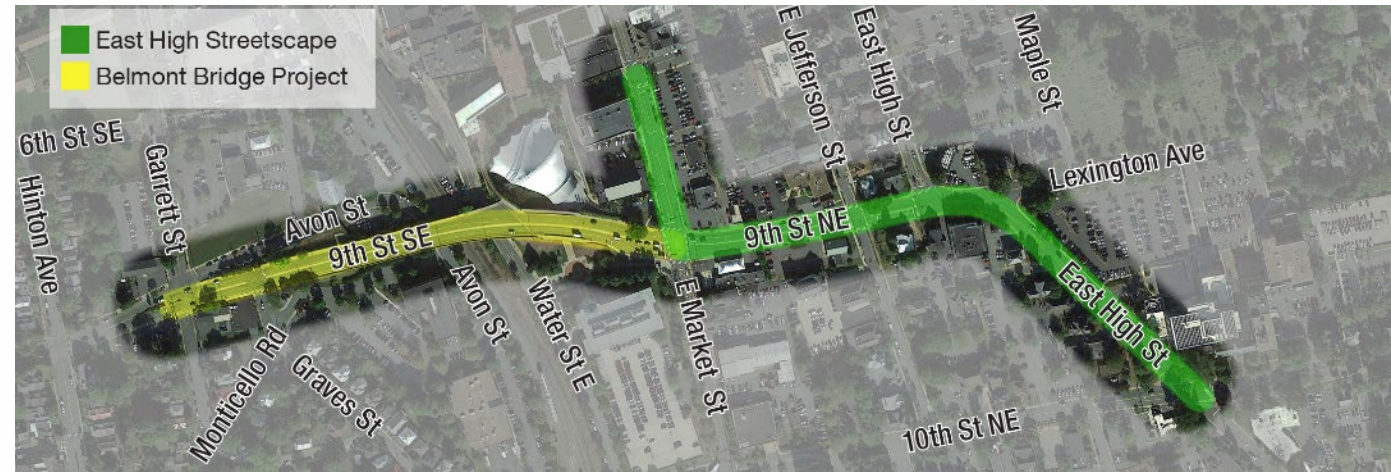
Project Overview



- Funded in 2016 through
- Multimodal improvements including:
 - Wider sidewalks, bike lanes, landscaping, ADA and pedestrian improvements, wayfinding and signal upgrades.
 - Evaluate undergrounding overhead utilities
- E. Market Street
 - From 7th Street to 9th Street
- 9th Street
 - From E. Market Street to E. High Street
- E. High Street
 - From 9th Street to 10th Street

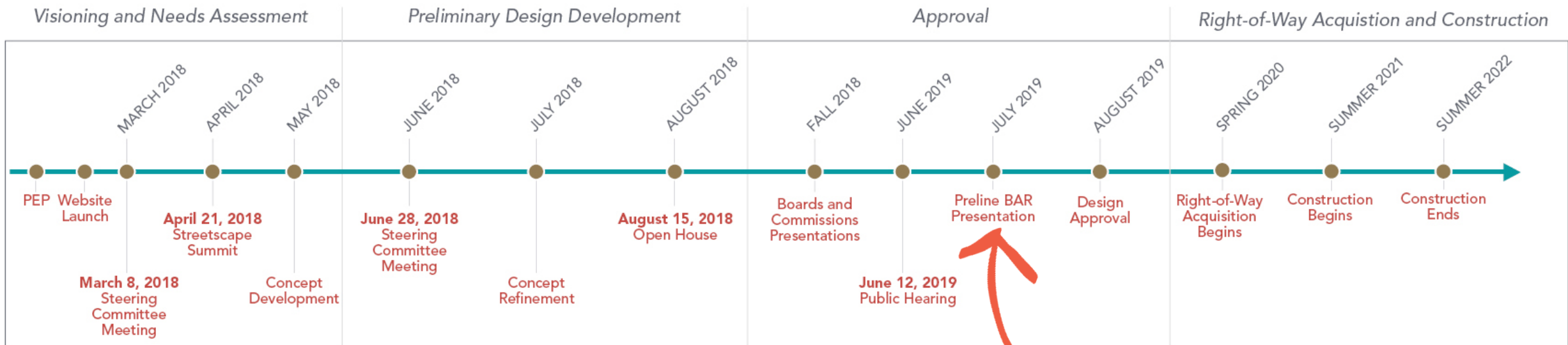


Total Budget: **\$7.16 Million**
(Not including potential underground utility betterment)



<https://smartportal.virginiahb2.org/#/public/applications/2017/hb2/view/F1-0000000187-R01>

Process/Schedule



We are here!

Public Engagement Overview



Visioning & Needs Assessment

As of December 2019



Steering Committee Meeting #1



17,500+

individual data points

EastHighStreetscape.org Website



1,000+

touch points

500+

written comments

Streetscape Summit



MetroQuest Survey



Steering Committee Meeting #2



Open House



Presentations to City Committees



Approval by Planning Commission



Approval by City Council



Coordination with Active Developments



Key Takeaways

- Overall, pedestrian facilities and multimodal mobility is a priority
- Desire to provide a safe and walkable street that enhances neighborhood connections
- Utilize design features and proposed amenities to enhance the overall environment for all users



Vision & Needs Assessment

Common Themes and Key Takeaways



- **Key Words** | safe, walkable/pedestrian-friendly, functional

- **Priorities**

1. Pedestrian Facilities
2. Landscaping
3. Bicycle Facilities
4. Traffic and Travel Speeds
5. Lighting



- **Challenges** | traffic volumes, limited space/competing priorities, Lexington and E. High intersection
- **Outcomes** | conformance to Comprehensive Plan & City Council approval



Preliminary Design Development

Design Public Hearing – Key Themes & Takeaways



46

attendees

30+

written comment
forms or e-mails

Key Takeaways

- Overall support of bicycle and pedestrian improvements
- Desire for planting palette enhancements including larger canopy trees
- Interest in how planned Tarleton Oaks development works with streetscape
- Support for conversion of existing overhead utilities to underground
- Concerns expressed regarding traffic
- Challenges with competing priorities in limited space and need for compromise

Preliminary Design Review



60% Design



Project Location

North Arrow & Scale

Legend

Proposed Asphalt

Existing Right of Way

Proposed Sidewalk

Proposed Right of Way Line

Proposed Stormwater Best Management Practice (BMP)

Proposed Permanent Easement

Proposed Green Bike Pavement Marking

Proposed Temp. Construction Easement

Area Under Further Study

Proposed Curb

Proposed Trees

Proposed Pedestrian Signal

Proposed Signal

Contact Information

Written comments may be sent by June, 22 2019 to:

Tim Motsch
City of Charlottesville
610 East Market Street
P.O. Box 911
Charlottesville, Va. 22902

E-mail comments may also be sent to:

motscht@charlottesville.org

Visit www.EastHighStreetscape.org for more information

East High Streetscape
Charlottesville, Virginia

State Project : U000-104-298
UPC 106480

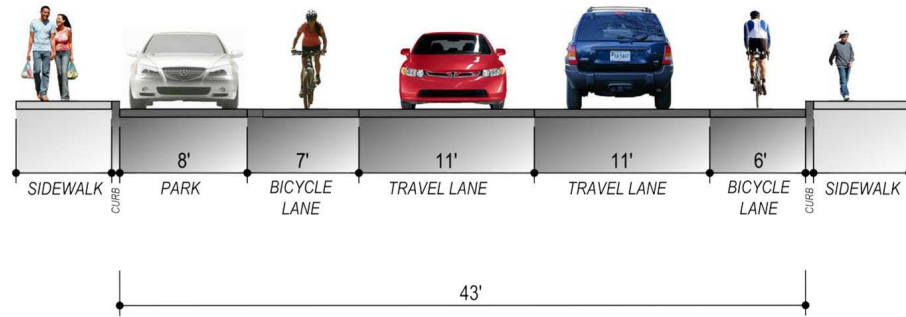
These plans are unfinished and unapproved and are not to be used for any type of construction or the acquisition of right of way. Preliminary easements for utility relocations are approximate only and subject to change as project design is finalized.

Imagery Courtesy of the Commonwealth of Virginia copyright 2018

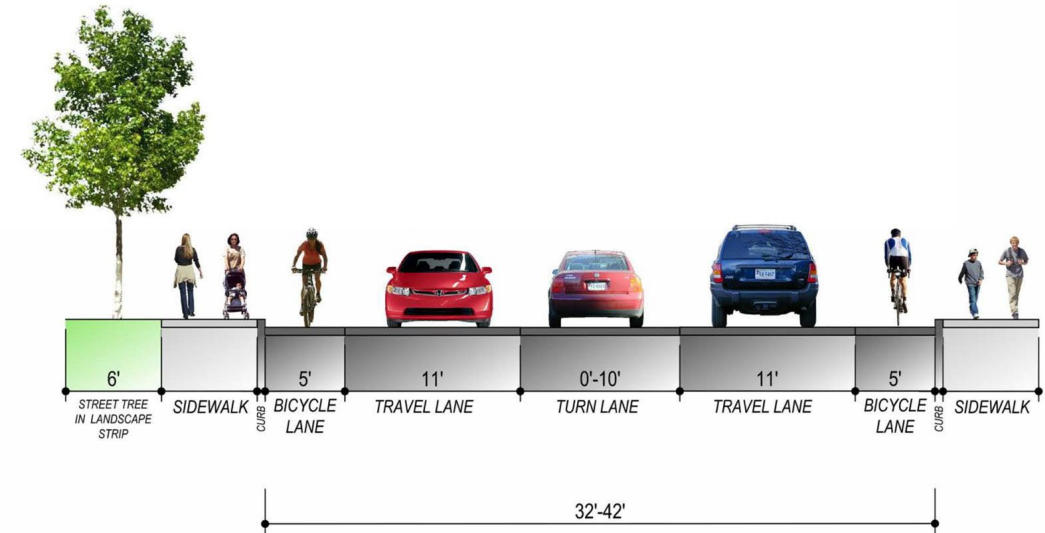


Preliminary Design Development

E. Market Street



SECTION A - MARKET ST BETWEEN 8TH ST. AND 7TH ST.

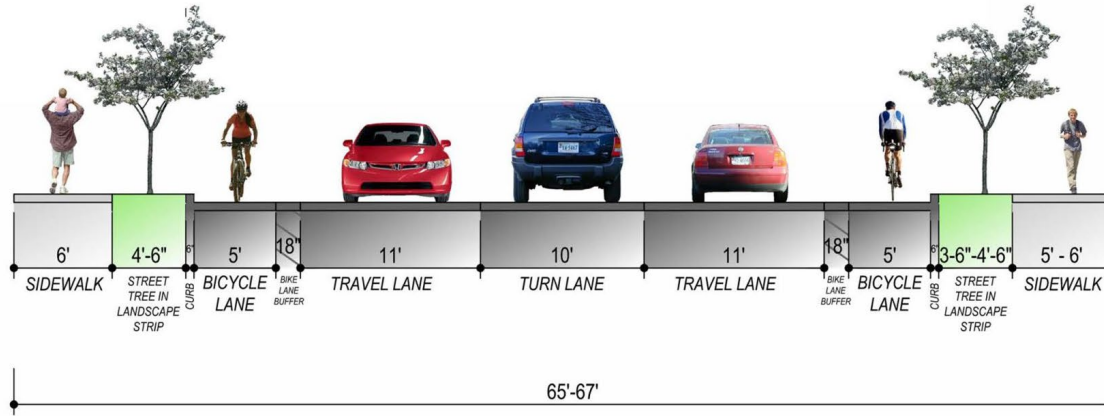


SECTION B - MARKET ST BETWEEN 8TH ST. AND 9TH ST.

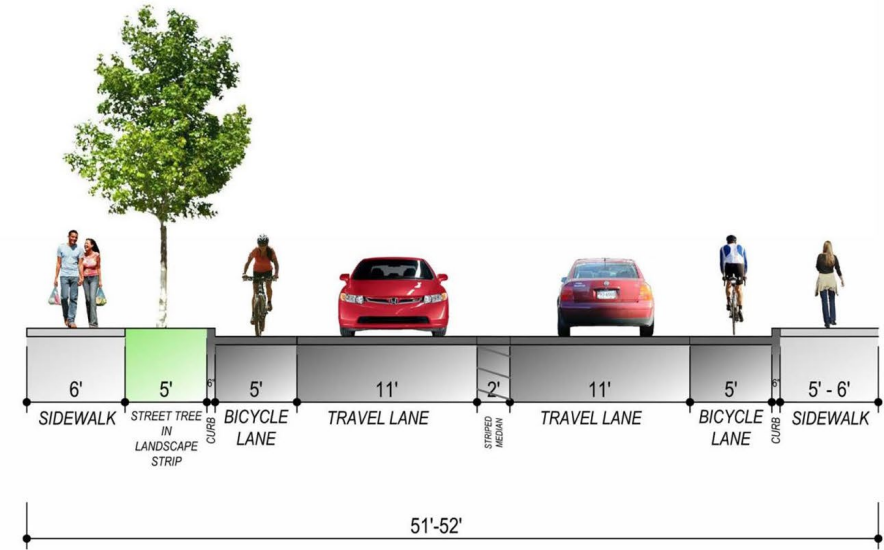


Preliminary Design Development

9th Street NE/E. High Street



SECTION C - 9TH ST. BETWEEN MARKET ST. AND E. JEFFERSON ST.

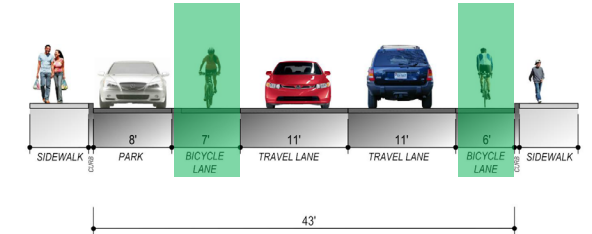
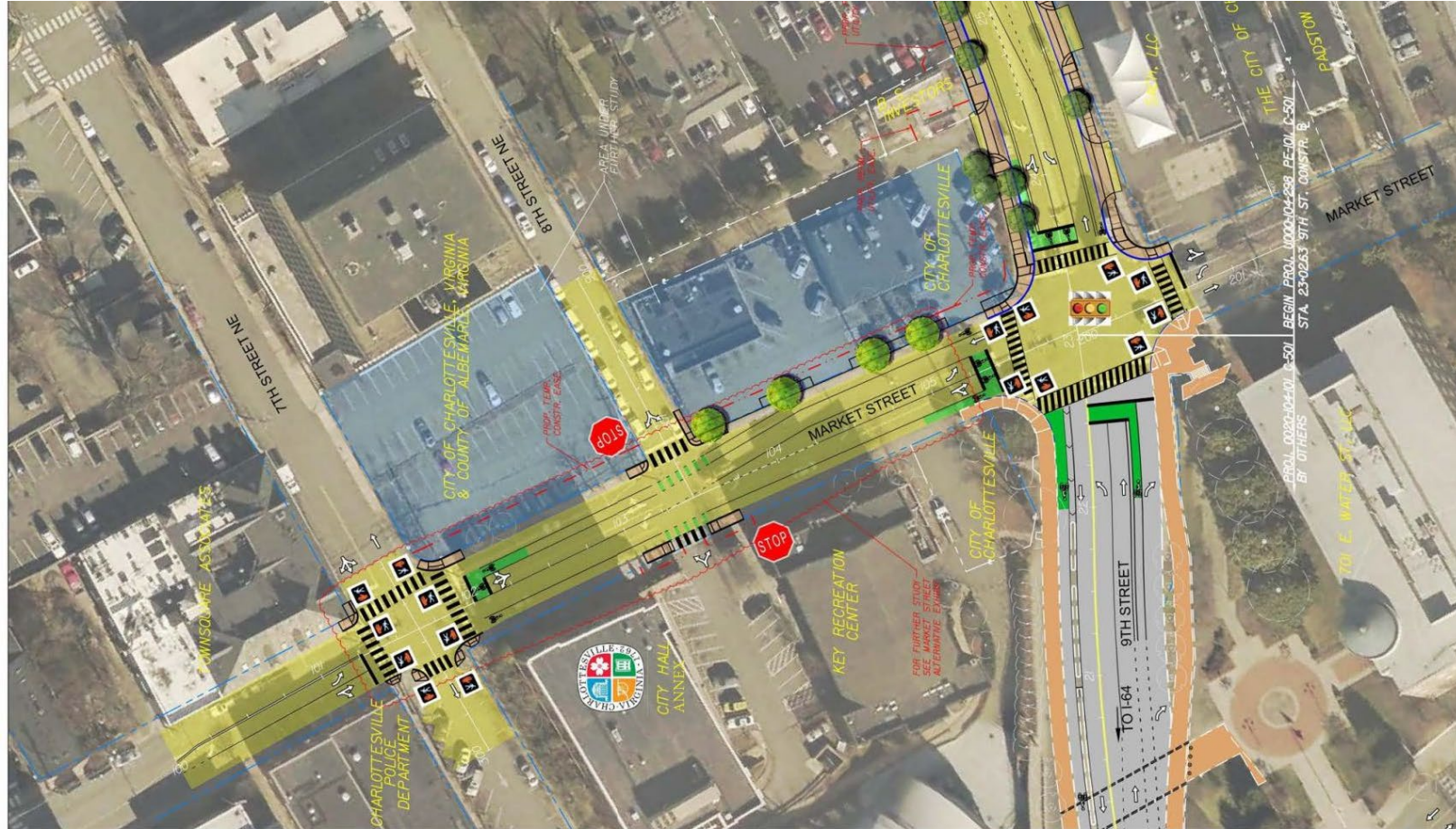


SECTION D - EAST HIGH ST. BETWEEN 9 1/2 ST. AND CFA



Preliminary Design Development

Restriping for Bike Lanes on E. Market St.

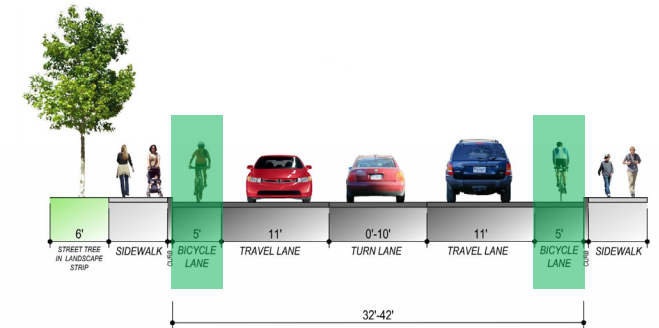


SECTION A - MARKET ST BETWEEN 8TH ST. AND 7TH ST.

EAST HIGH
STREETSCAPE



TYPICAL SECTION
October 2022
Kimley-Horn



SECTION B - MARKET ST BETWEEN 8TH ST. AND 9TH ST.

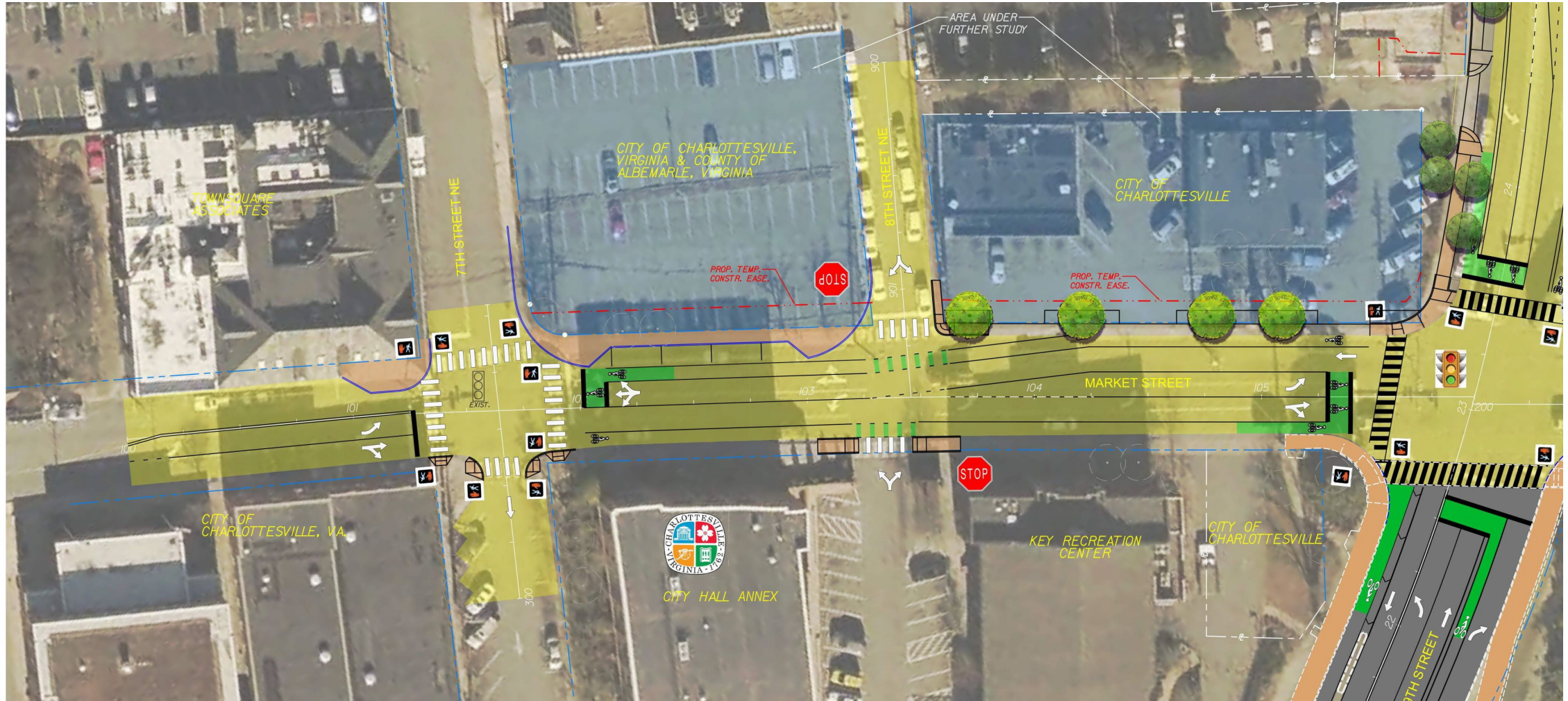
EAST HIGH
STREETSCAPE



TYPICAL SECTION
May 2023
Kimley-Horn

Preliminary Design Development

ADA Improvements on E. Market Street



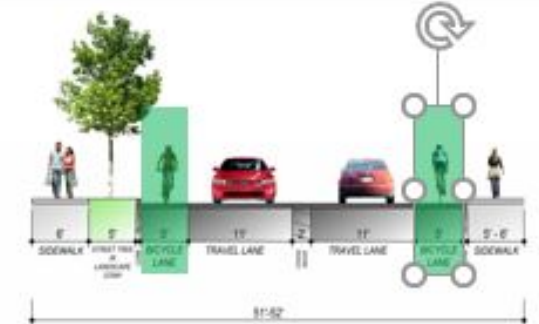
Preliminary Design Development Bike Lanes on 9th St. NE and E. High St.



SECTION C - 9TH ST. BETWEEN MARKET ST. AND E. JEFFERSON ST.

CHARLOTTE, NC
EAST HIGH
STREETSCAPE

TYPICAL SECTION
KIMLEY-HORN



SECTION D - EAST HIGH ST. BETWEEN 9 1/2 ST. AND CFA

CHARLOTTE, NC
EAST HIGH
STREETSCAPE

TYPICAL SECTION
KIMLEY-HORN



Preliminary Design Development Improvements at 9th Street NE/E. High Street



Existing Condition



Proposed Improvements

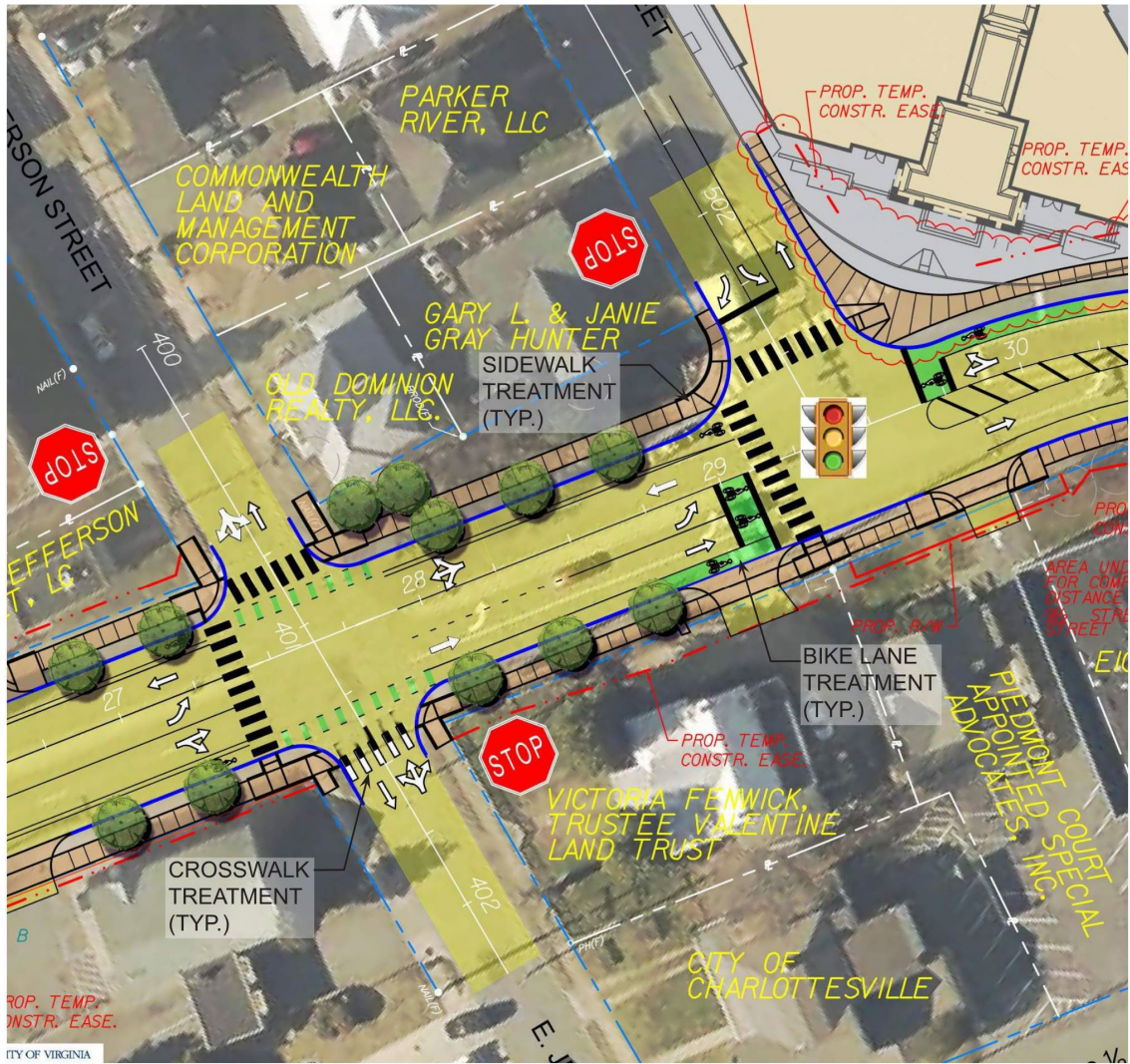
****Note:** The project team is currently working with the Tarleton Oak development to develop a coordinated design



Preliminary Design Development Materials and Hardscape



Materials



Note: Materials are consistent with the Belmont Bridge Project



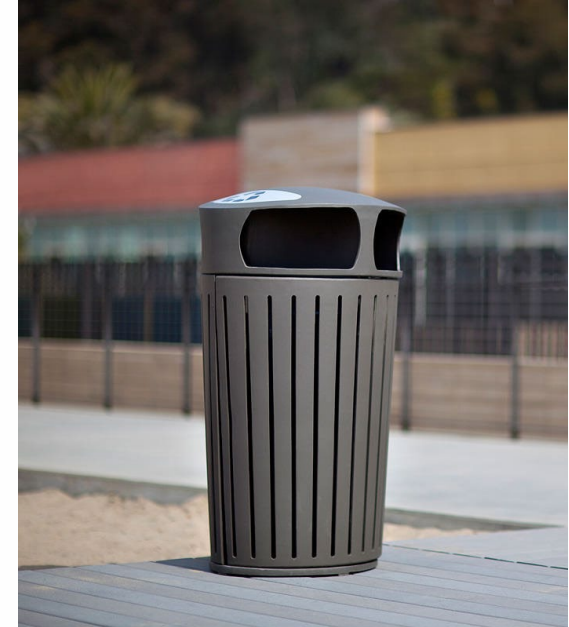
Furnishings



Landscape Forms: FGP Backed Bench



Landscape Forms: MultipliCITY Bike Racks



Forms and Surfaces:
Dispatch Trash Receptacle


Note: Materials are consistent with the Belmont Bridge Project



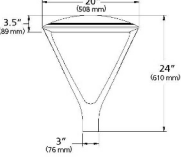
Lighting

Kim Lighting Ouro Pedestrian Light

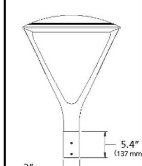
SPECIFICATIONS



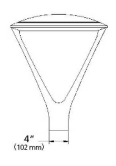
Weight: 35 lbs



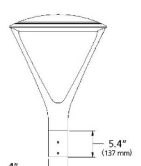
FM33
20" (508 mm)
3.5" (89 mm)
24" (610 mm)
3" (76 mm)
EPA: .512



PT23
5.4" (137 mm)
3" (76 mm)
EPA: N/A



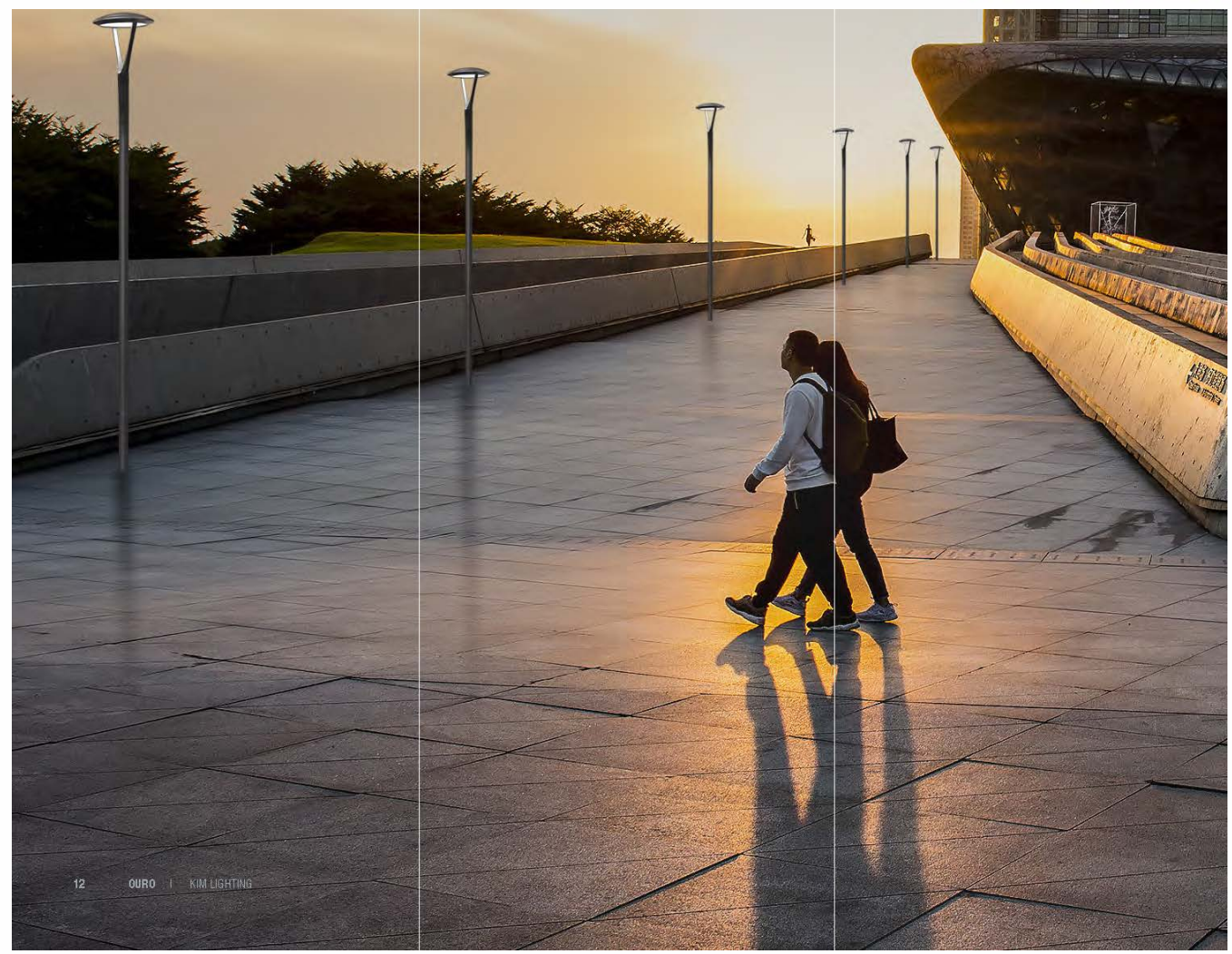
FM44
4" (102 mm)
EPA: .534



PT24 / PT34
5.4" (137 mm)
4" (102 mm)
EPA: .424 / .608



Note: Materials are consistent with the Belmont Bridge Project



Preliminary Design Development Planting

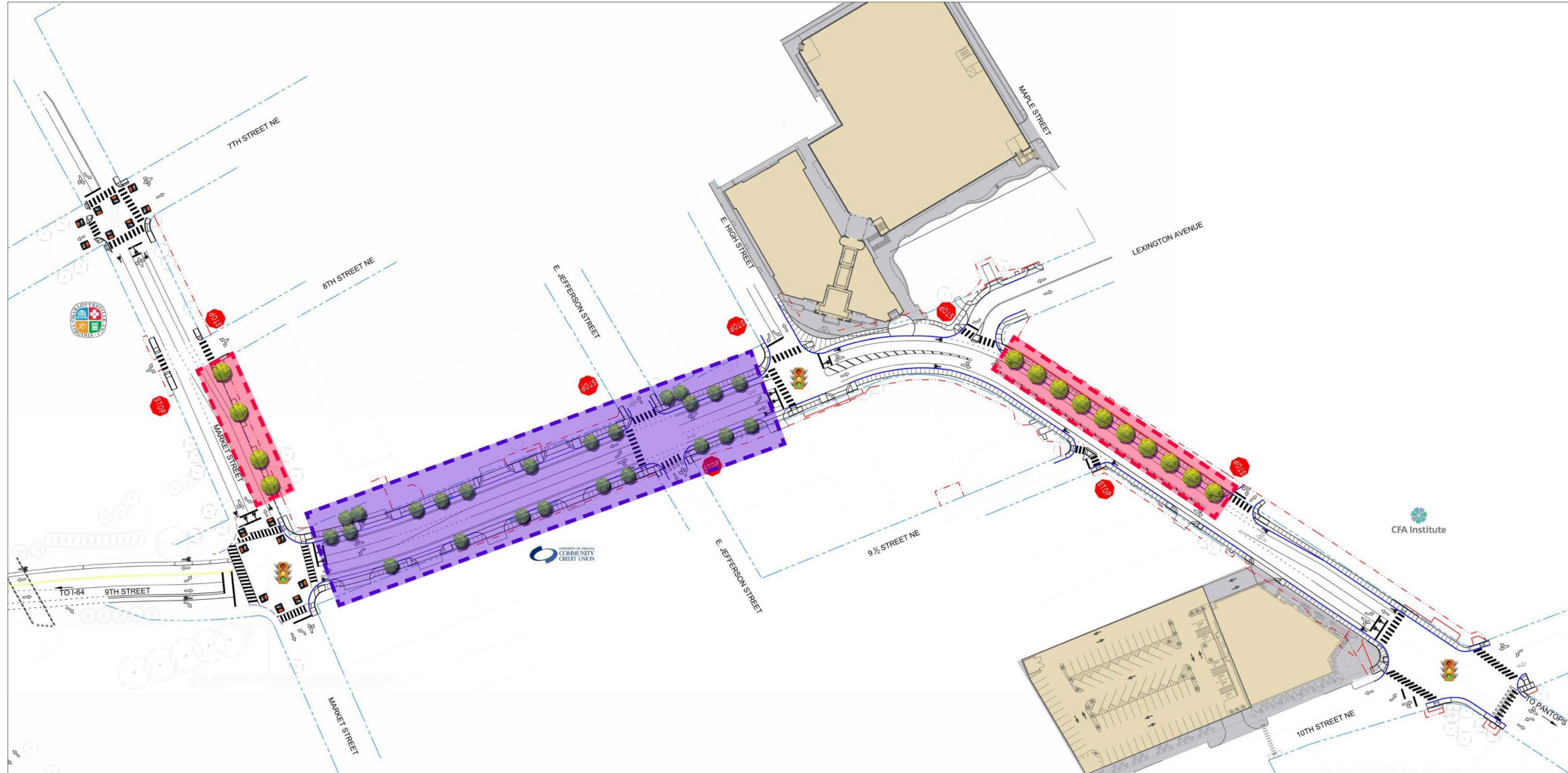


Planting Palette Presented at Public Hearing

 Proposed Canopy Trees
Potential Species:
Ginkgo Tree (Male)
G. bilboa
American Elm 'Jefferson'
U. americana
'Armstrong' Red Maple
A. rubrum 'Armstrong'
London Plane Tree
P. x acerifolia

 Proposed Understory Trees
Potential Species:
Flowering Dogwood
C. florida
Serviceberry (multi-stem)
A. grandiflora
Eastern Redbud
C. canadensis
River Birch
B. nigra 'Heritage'

Note: Tree species
selected are consistent
with Charlottesville's
Master Tree List



Belmont Bridge Planting Palette

BELMONT BRIDGE

MASTER PLANT SCHEDULE

| TREES | QTY | SHEET 3 | SHEET 3B | SHEET 4 | SHEET 5 | BOTANICAL NAME | COMMON NAME | CONT | CAL | SIZE | REMARKS | |
|---------------|-------|---------|----------|---------|---------|--------------------------------------|--|-------|----------------|--------------|---|-----------------------|
| BO | 12 | 10 | | 2 | | BETULA NIGRA 'DURAHEAT' | DURAHEAT RIVER BIRCH | 8 & 8 | 10' HT. MIN. | | STRONG CENTRAL LEADER, MULTI-STEM, 3 MIN-4 MAX. | |
| CH | 20 | 10 | 8 | 4 | | CERCIS CANADENSIS 'HEARTS OF GOLD' | HEARTS OF GOLD REDBUD | 8 & 8 | 10' HT. MIN. | | STRONG CENTRAL LEADER | |
| GB | 11 | | | 4 | 7 | GRINGO BILOBA 'AUTUMN GOLD' TM | MADENHAR TREE | 8 & 8 | 2.5' CAL. MIN. | | STRONG CENTRAL LEADER, MATCH | |
| GF | 4 | 1 | | 3 | | GRINGO BILOBA 'FASTIGIATA' | FASTIGIATE MADENHAR TREE | 8 & 8 | 2.5' CAL. MIN. | | STRONG CENTRAL LEADER, MATCH, FRUITLESS | |
| MJ | 14 | | | 14 | | MAGNOLIA VIRGINIANA 'JIM WILSON' | MOONGLOW SWEET BAY MAGNOLIA | 8 & 8 | 10' HT. MIN. | | STRONG CENTRAL LEADER, MATCH | |
| ML | 13 | | | 13 | | MAGNOLIA GRANDIFLORA 'LITTLE GEM' | DWARF SOUTHERN MAGNOLIA | 8 & 8 | 10' HT. MIN. | | STRONG CENTRAL LEADER, FULL TO BASE | |
| PA | 21 | 15 | | 6 | | PLATANUS X ACERIFOLIA 'BLOODGOOD' | BLOODGOOD LONDON PLANE TREE | 8 & 8 | 2.5' CAL. MIN. | | STRONG CENTRAL LEADER | |
| QH | 9 | 3 | 4 | 2 | | QUERCUS PHellos 'HIGHTOWER' | HIGHTOWER WILLOW OAK | 8 & 8 | 2.5' CAL. MIN. | | STRONG CENTRAL LEADER, MATCH | |
| | | | | | | | | | | | | |
| SHRUBS | QTY | SHEET 3 | SHEET 3B | SHEET 4 | SHEET 5 | BOTANICAL NAME | COMMON NAME | SIZE | WIDTH | HEIGHT | SPACING | REMARKS |
| AR | 5 | 5 | | | | ARONIA ARBUTIFOLIA 'BRILLIANTISSIMA' | BRELIANT RED CHOKEBERRY/RED CHOKEBERRY | #3 | | 24' HT. MIN. | 48' o.c. | |
| CO | 25 | 18 | | 4 | | CORNUS SERICEA 'CARDINAL' | RED TWIG DOGWOOD | #3 | 48' O.C. | 24' HT. MIN. | 48' o.c. | FULL TO GROUND, DENSE |
| CU | 38 | 38 | | | | CLETHRA ALNIFOLIA 'HUMBINGBIRD' | SUMMERSWEET | #3 | 36' O.C. | 24' HT. MIN. | 36' o.c. | |
| IG | 122 | 64 | | 27 | 31 | ILEX GLABRA 'SHAMROCK' | SHROCK | #3 | 36' O.C. | | 42' o.c. | FULL TO BASE |
| IN | 38 | 38 | | | | ITEA VIRGINICA 'HENRY'S GARNET' | HENRY'S GARNET SWEETSPIRE | #3 | 36' O.C. | | 36' o.c. | |
| IT | 48 | 48 | | | | ITEA VIRGINICA 'LITTLE HENRY' TM | LITTLE HENRY VIRGINIA SWEETSPIRE | #3 | 42' O.C. | 24' HT. MIN. | 42' o.c. | |
| MC | 57 | 30 | | 18 | 9 | MYRTICA CERIFERA | WAX MYRTLE | #3 | | 36' HT. MIN. | 48' o.c. | |
| PO | 60 | 8 | | 19 | 33 | PRUNUS LAUROCEASUS 'OTTO LUYKEN' | LUYKEN'S LAUREL | #3 | 36' O.C. | 24' HT. MIN. | 42' o.c. | |
| | | | | | | | | | | | | |
| GROUND COVERS | QTY | SHEET 3 | SHEET 3B | SHEET 4 | SHEET 5 | BOTANICAL NAME | COMMON NAME | CONT | WIDTH | HEIGHT | SPACING | REMARKS |
| OST | 33 | 33 | | | | CAREX STRICTA | TUSsock SEDGE | #1 | 18' O.C. | | 18' o.c. | |
| ECP | 274 | 188 | | 23 | 63 | ECHINACEA PURPUREA 'BRIGHT STAR' | PURPLE CONEFLOWER | #1 | 18' O.C. | | 18' o.c. | |
| EDJ | 194 | 92 | | 72 | | EUPATORIUM DUBIUM 'LITTLE JOE' | JOE-PYE WEED | #1 | 18' O.C. | | 18' o.c. | |
| HRH | 317 | 271 | | 46 | | HEMEROCALLIS X 'HAPPY RETURNS' | HAPPY RETURNS DAYLILY | #1 | 18' O.C. | | 18' o.c. | |
| HYB | 52 | 52 | | | | HYPERICUM CALYCHONUM 'BROGDADOOK' | CREeping ST. JOHN'S WORT | #1 | 18' O.C. | | 18' o.c. | |
| IRV | 40 | 40 | | | | IRIS VERSICOLOR | BLUE FLAG | #1 | 18' O.C. | | 18' o.c. | |
| JCB | 148 | 148 | | | | JUNIPERUS CONFERTA 'BLUE PACIFIC' | BLUE PACIFIC JUNPER | #1 | 18' O.C. | | 18' o.c. | |
| LMB | 481 | 427 | | 54 | | LIRIOPE MUSCARI 'BIG BLUE' | BIG BLUE LILY TURF | #1 | 12' O.C. | | 12' o.c. | |
| LMV | 2,801 | 333 | 808 | 961 | 502 | LIRIOPE MUSCARI 'VARIEGATA' | VARIEGATED LILY TURF | #1 | 12' O.C. | | 12' o.c. | |
| NRW | 383 | 134 | | 229 | | NEPETA RACEMOSA 'WALKER'S LOW' | CATMINT | #1 | 18' O.C. | | 18' o.c. | |
| PAH | 40 | 40 | | | | PENNISETUM ALOPECUROIDES 'HAMELIN' | DWARF FOUNTAIN GRASS | #1 | 24' O.C. | | 24' o.c. | |
| PVH | 105 | 21 | | 84 | | PANICUM VIRGATUM 'HEAVY METAL' | BLUE SWITCH GRASS | #1 | 36' O.C. | | 36' o.c. | |
| PVS | 81 | 37 | | 14 | | PANICUM VIRGATUM 'SHERARDIAN' | SWITCH GRASS | #1 | 36' O.C. | | 36' o.c. | |
| RAG | 134 | 48 | | 7 | 69 | RHUS AROMATICA 'GRO-LOW' | GRO-LOW FRAGRANT SUMAC | #1 | 36' O.C. | | 36' o.c. | |
| RPG | 138 | 82 | | 74 | | RUDBECKIA FULGIDA 'GOLDSTRAU' | CONEFLOWER | #1 | 18' O.C. | | 18' o.c. | |
| SAF | 142 | 85 | | 77 | | SEDUM X 'AUTUMN JOY' | AUTUMN JOY STONECRP | #1 | 18' O.C. | | 18' o.c. | |
| SCB | 114 | 114 | | | | SOLIDAGO CANADENSIS 'BABY GOLD' | GOLDENROD | #1 | 18' O.C. | | 18' o.c. | |

Trees on the Belmont Bridge project that are consistent with the High Street planting list presented at public hearing



Public Hearing Feedback on Planting

Key Takeaways

- Encourage the use of native trees
- Consider pedestrian comfort and safety
- Desire for larger trees rather than understory

• Priorities

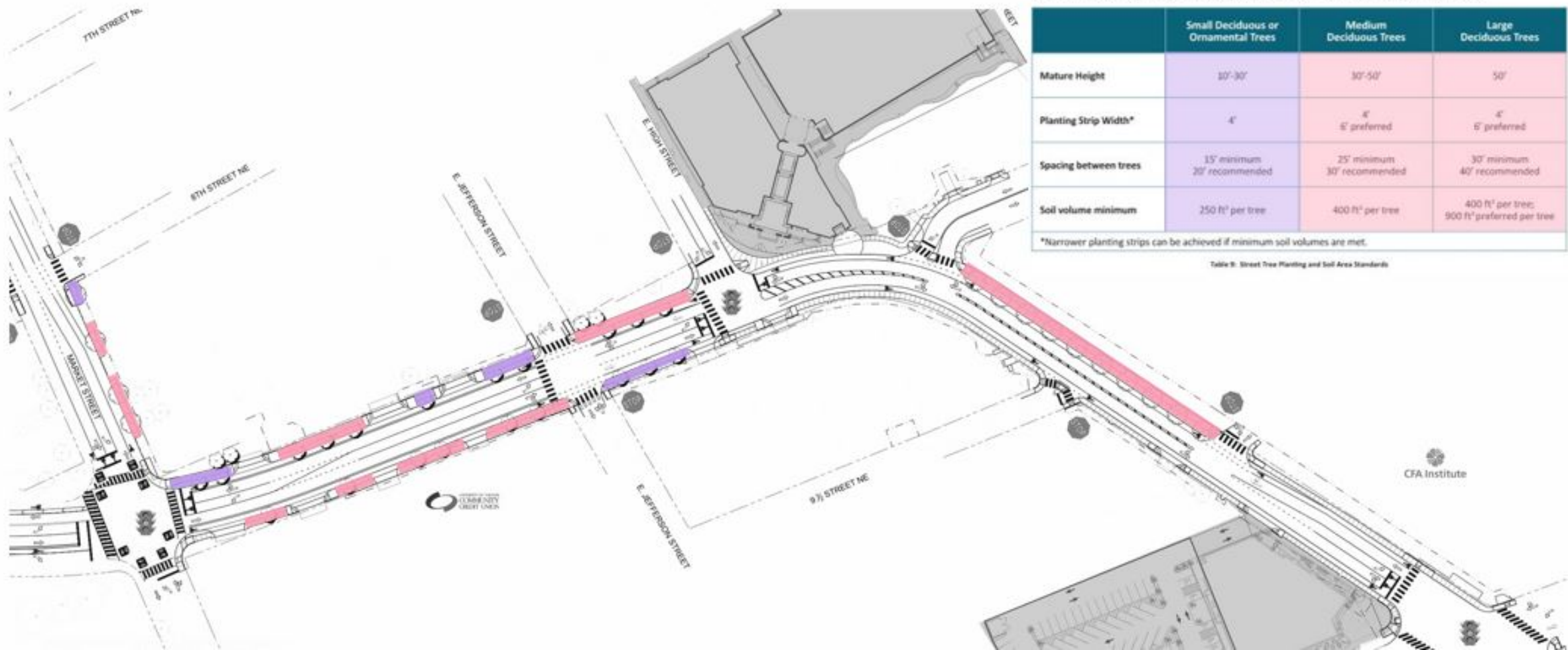
1. Large trees for shade
2. Native tree varieties

• Challenges

1. Adequate soil volume available for large trees
2. Overhead electric utilities



Soil Volume & Trees



Potential Large Canopy Trees



London Plane Tree
Platanus x acerifolia
'Bloodgood'



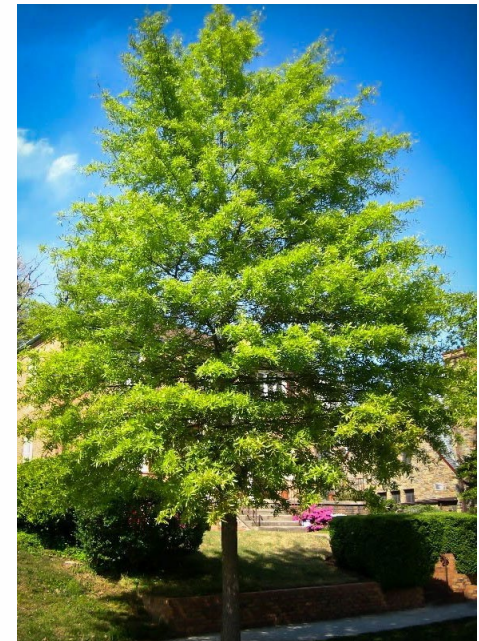
Sweet Gum
Liquidambar styraciflua
'Rotundiloba'



Scarlet Oak
Quercus coccinea



American Linden
Tilia Americana



Willow Oak
Quercus phellos 'Hightower'



Potential Small Understory Trees



Flowering Dogwood
Cornus florida



American Hornbeam
Carpinus caroliniana



Serviceberry
Amelanchier x grandiflora



Redbud
Cercis canadensis
'Hearts of Gold'



Winter King Hawthorn
Crataegus viridis 'Winter King'



Native



Native



Native



Native



Native





Thank You!

Questions?

June 18, 2019

