



City of Charlottesville PLACE Committee Meeting

November 8, 2018



Tonight's Agenda



Agenda	
	Process/Schedule
	Public Engagement Overview
	Conceptual Design Review
	Next Steps



Process/Schedule



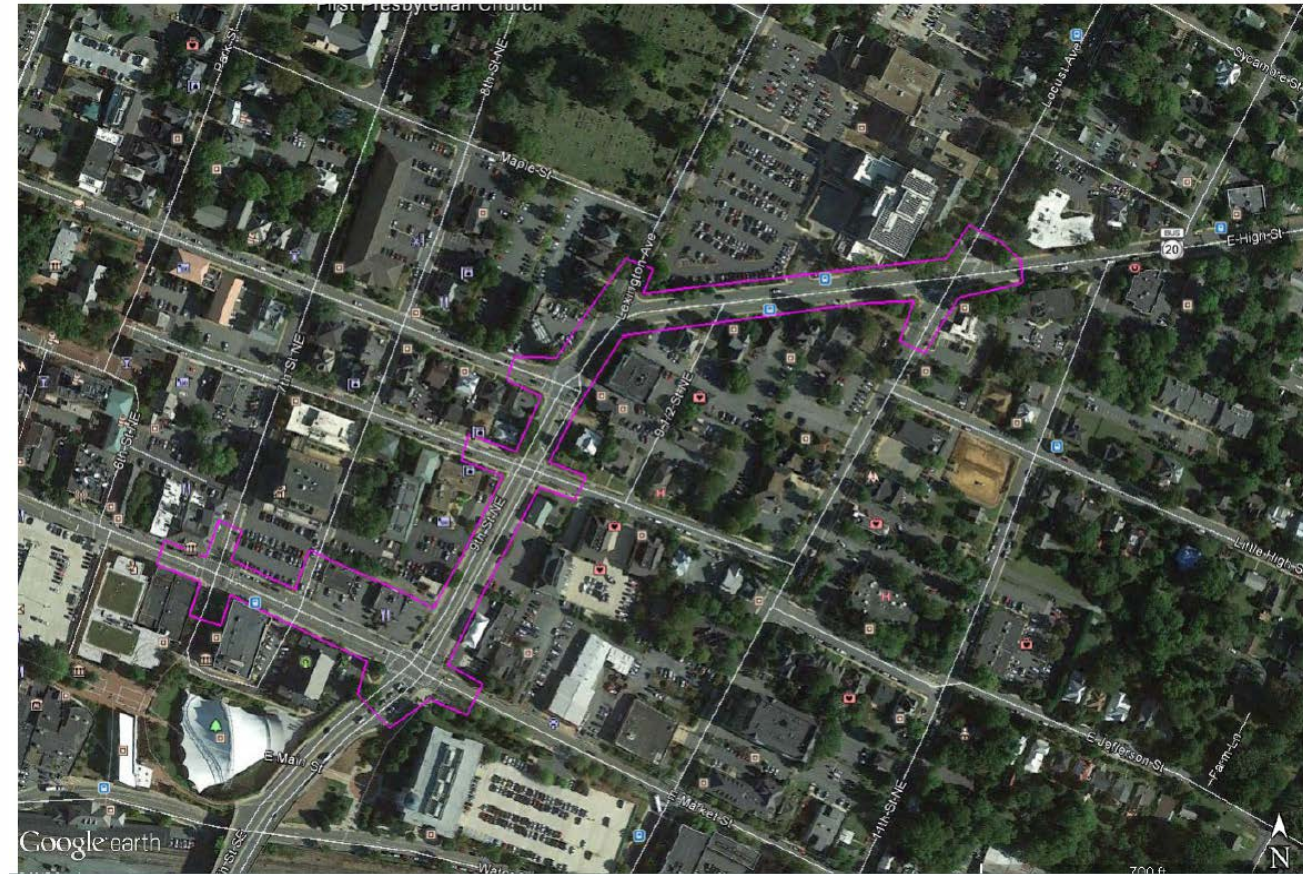
Project Overview



- Funded in 2016 through
- Multimodal improvements including:
 - Wider sidewalks, bike lanes, landscaping, ADA and pedestrian improvements, wayfinding and signal upgrades.
 - Evaluate undergrounding overhead utilities
- E. Market Street
 - From 7th Street to 9th Street
- 9th Street
 - From E. Market Street to E. High Street
- E. High Street
 - From 9th Street to 10th Street
- City hires Kimley-Horn for design.



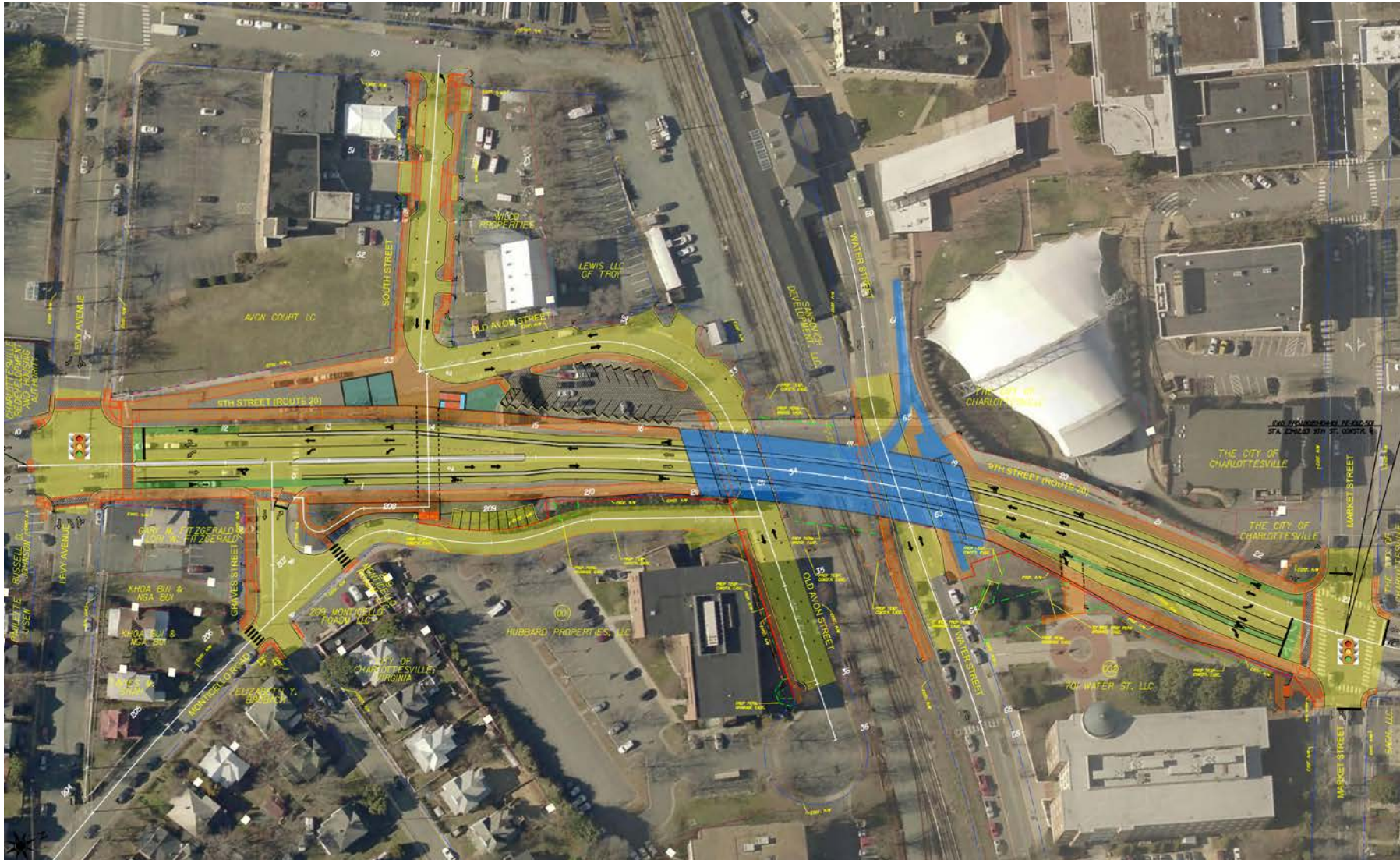
Total Budget: \$5.59 Million
(Not including potential underground utility betterment)



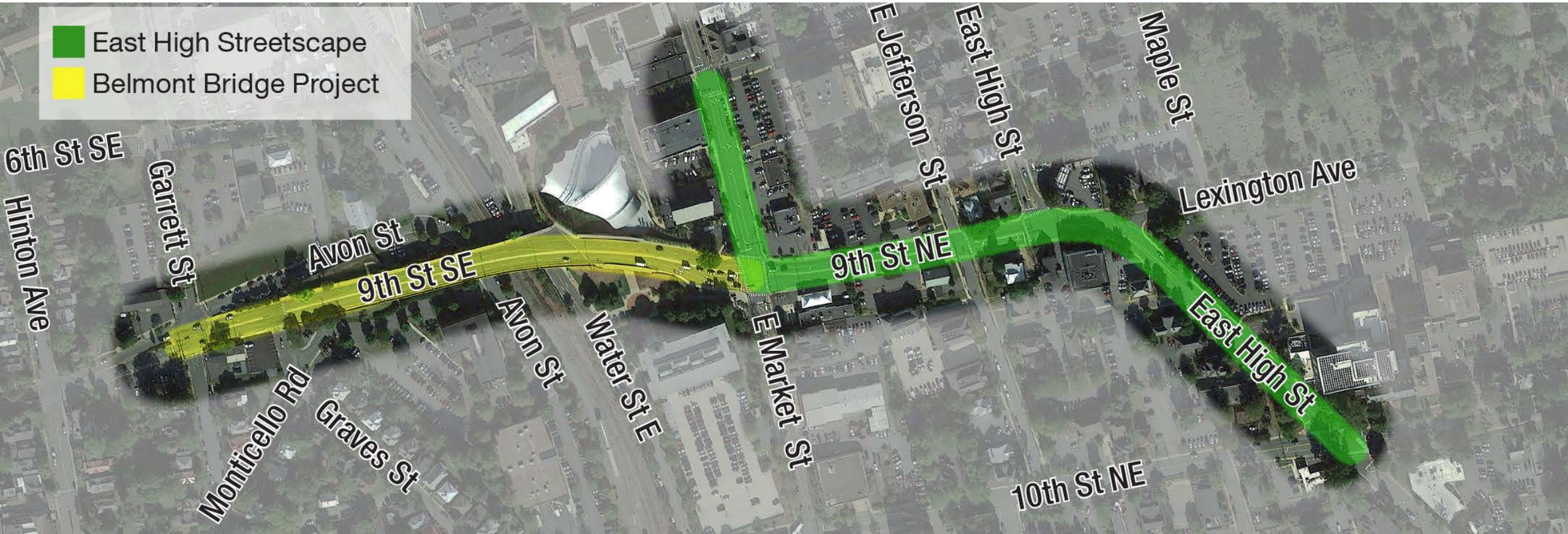
<https://smartportal.virginiahb2.org/#/public/applications/2017/hb2/view/F1-0000000187-R01>



Connection to Belmont Bridge Replacement



Connection to Belmont Bridge Replacement



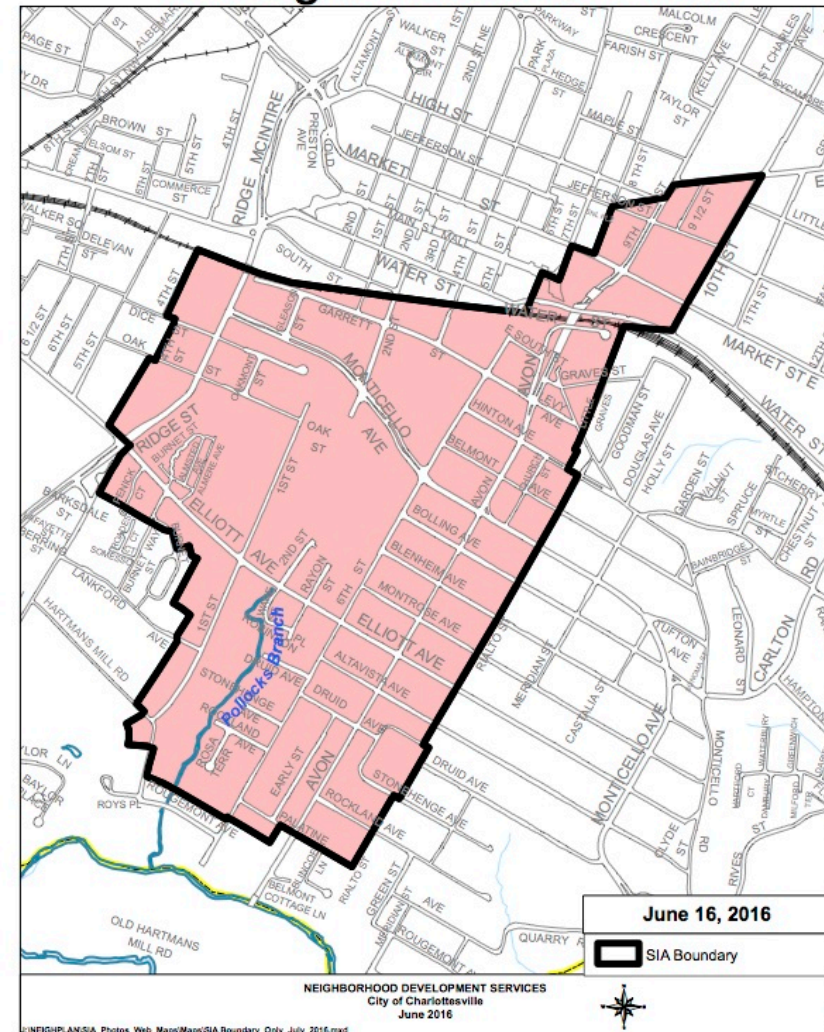
Strategic Investment Area (SIA Plan)

Strategic Investment Area

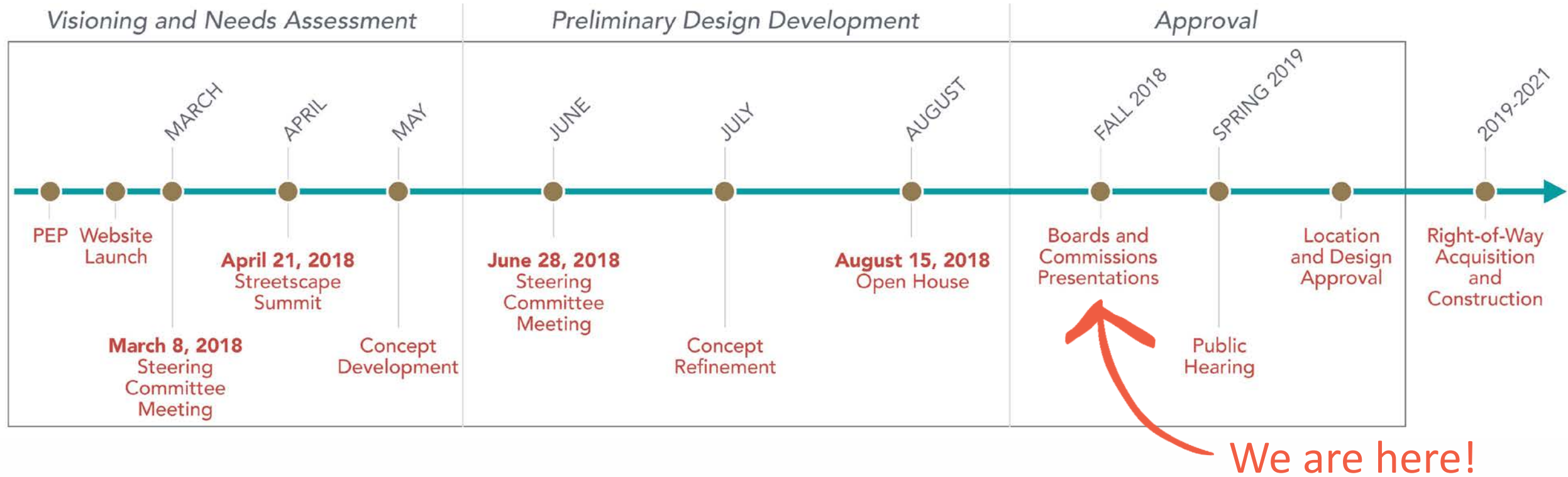
■ Purpose of the SIA Plan

“To initiate a transformational process to engage stakeholders, city staff, and members of the greater community in the future of the Strategic Investment Area.”

- To provide guidance for future redevelopment and investment in the area
- To provide guidance for improvements to affordable housing, including existing public and assisted housing
- To provide guidance for improved connections throughout the area
- To provide recommend strategies for expanding employment opportunities within the SIA



Process/Schedule



Public Engagement Overview



Steering Committee



- David Katz Belmont Carlton Neighborhood Association
- Lena Seville Bike and Pedestrian Advisory Committee
- Rosamond Casey Little High Neighborhood Association
- Greg Jackson Little High Neighborhood Association
- Eberhard Jehle Martha Jefferson Neighborhood Association
- Michael Wheelwright North Downtown Neighborhood Association
- Lisa Green Planning Commission and Entrance Corridor
- Brian Menard Tree Commission
- Carl Schwarz Board or Architectural Review
- Chris Henry PLACE Committee





This is your connection to Downtown. Let's work together to make it better. The East High streetscape project includes portions of Market Street, 9th Street, and East High Street. With the upcoming replacement of Belmont Bridge and available funding from the SMART SCALE prioritization process, now is the time to come together to identify priorities, discover and celebrate our community expectations, and add lasting value to this important link in the City's transportation network.

We need your input!

Website - <https://www.easthighstreetscape.org/>



Outreach & Engagement

Since March 2018



1,000+

touch points

17,500+

individual data points

500+

written comments

Steering Committee Meeting #1



Streetscape Summit



MetroQuest Survey



Future Steering Committee Meetings



Open House



Presentations to Boards & Commissions

Public Hearing

EastHighStreetscape.org



Key Takeaways

- Overall, pedestrian facilities and multimodal mobility is a priority
- Desire to provide a safe and walkable street that enhances neighborhood connections
- Utilize design features and proposed amenities to enhance the overall environment for all users

Steering Committee Meeting #1

Common Themes and Key Takeaways



- **Key Words** | safety, gateway, walkable
- **Strengths** | location, connections
- **Challenges** | traffic, balancing modes

Expectations

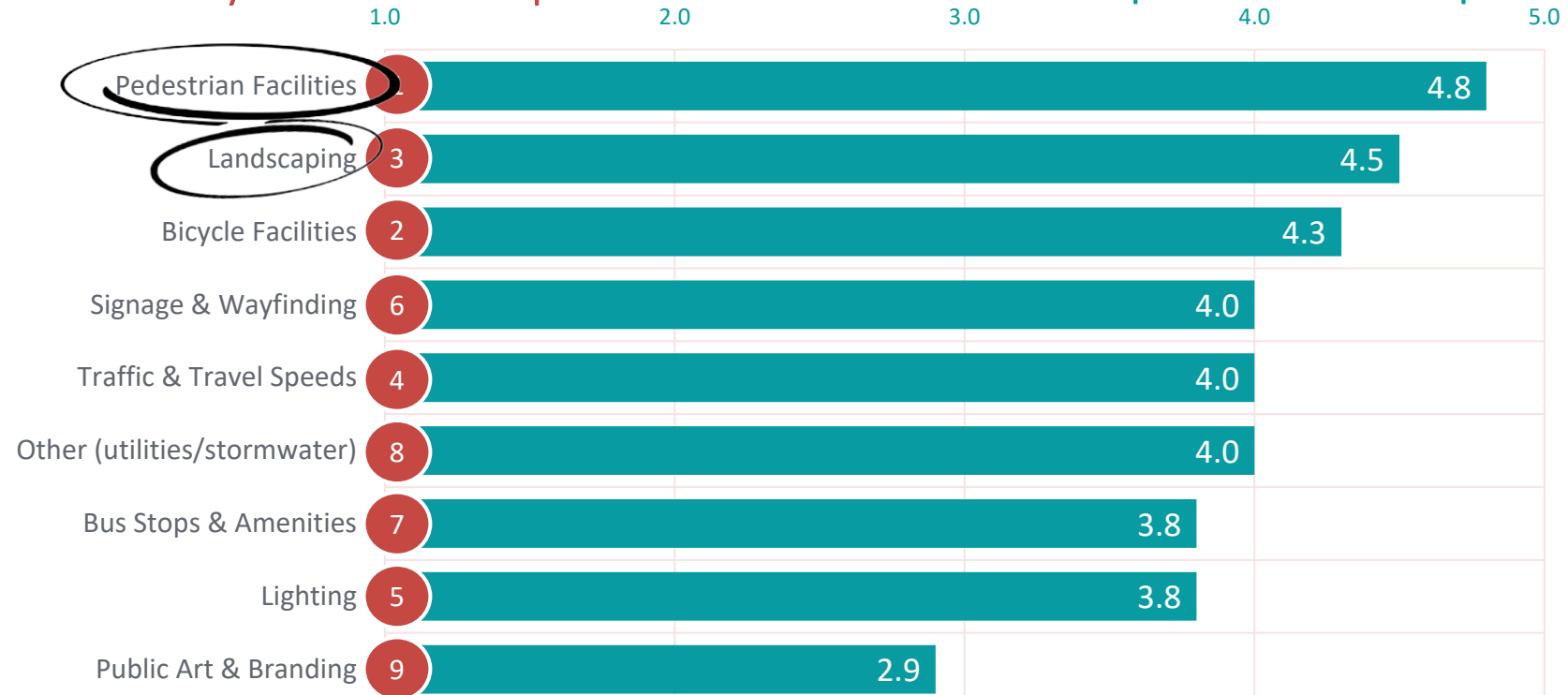
travel options, connectivity, land use/design

- **Priorities**

1. Pedestrian Facilities
2. Landscaping
3. Bicycle Facilities
4. Traffic and Travel Speeds

How would you rank the topics?

How important is the topic?



Streetscape Summit

Information Wall

One Word

Priority Pyramid

Thought Wall

Strong Places/Weak Places

Visual Preference

Street Builder

Walkabouts



Streetscape Summit

Common Themes and Key Takeaways



- **Key Words** | safe, pedestrian-friendly, welcoming

- **Priorities**

1. Pedestrian Facilities
2. Landscaping
3. Bicycle Facilities
4. Traffic and Travel Speeds



Same priorities as the Steering Committee



MQ participants had these in the top 5 with Lighting also included

- **Preferred Features** | buffered bike lanes, high-visibility crosswalks, trees
- **Other** | Lexington / High intersection frequently mentioned as an issue



MetroQuest Survey

Common Themes and Key Takeaways

- Many comments used words such as **simple**, **functional**, **aesthetic**, and **accessible** to describe the ideal streetscape.
- Most people prioritize design features that directly relate to the **movement of people** (regardless of mode). Ancillary investments such as branding, public art, and wayfinding typically rated lower.
- Enhanced design requests typically focused on **buffering** bicyclists and pedestrians from traffic.

530

participants

13,495

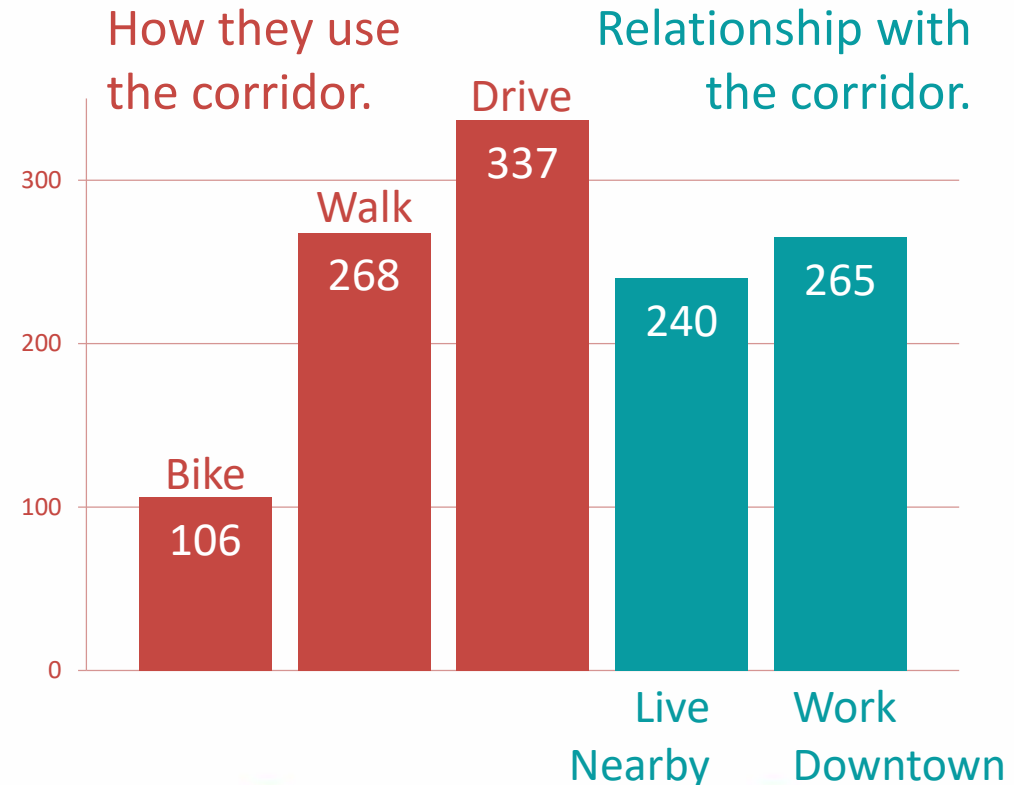
individual data points

380

written comments

4/18 to 5/31

survey period



Open House

Common Themes and Key Takeaways

- Opinions differed on whether to allocate space to bicyclists (bike lane and bike lane buffer) or landscaping (planting strip).
- Pedestrian crossings are important, particularly at East Jefferson Street.
- Support given to limiting access at Lexington Avenue (left-in/right-in/right-out).
- Support given to limiting access at the CFA Institute, however several comments expressed a lack of opinion.



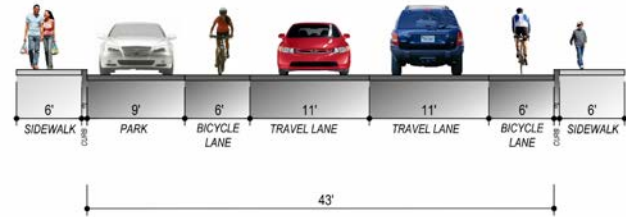
Conceptual Design Review



Conceptual Design



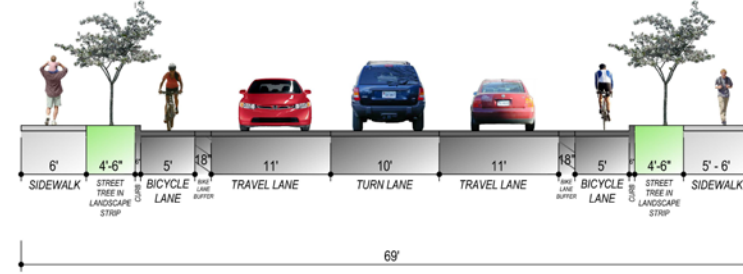
Conceptual Design



SECTION A - MARKET ST BETWEEN 8TH ST. AND 7TH ST.

Charlottesville, VA
EAST HIGH
STREETSCAPE

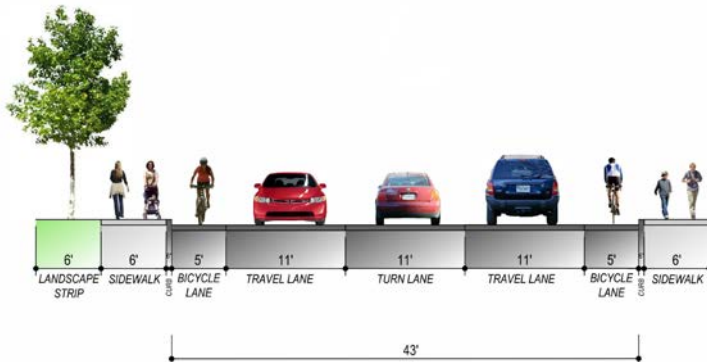
TYPICAL SECTION
October 2018
Kimley **Horn**



SECTION C - 9TH ST. BETWEEN MARKET ST. AND E. JEFFERSON ST.

Charlottesville, VA
EAST HIGH
STREETSCAPE

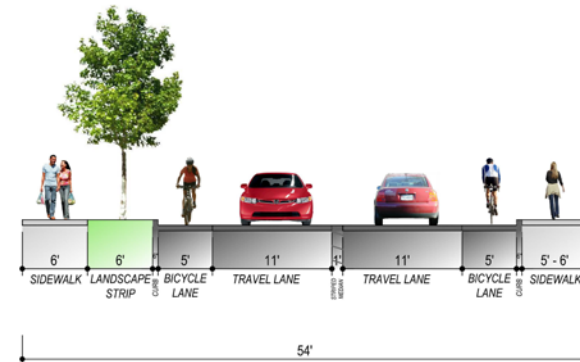
TYPICAL SECTION
October 2018
Kimley **Horn**



SECTION B - MARKET ST BETWEEN 8TH ST. AND 9TH ST.

Charlottesville, VA
EAST HIGH
STREETSCAPE

TYPICAL SECTION
October 2018
Kimley **Horn**



SECTION D - EAST HIGH ST. BETWEEN 9 1/2 ST. AND CFA

Charlottesville, VA
EAST HIGH
STREETSCAPE

TYPICAL SECTION
October 2018
Kimley **Horn**

Urban Design – Plant Palette



Streetscape

- High-canopy shade trees with upright branching to provide filtered or dappled shade during warmest months
- Heat-Tolerant
- Contextually appropriate
- Tolerant of urban environments
- Single Species, 3 to 4 season interest to provide unified character

Limited Streetscape

- Low canopy/understory trees with upright branching (area provides for less than 5' width of planting area)
- Heat-Tolerant
- Contextually appropriate
- Tolerant of urban environments
- Single Species, 3 to 4 season interest to provide unified character

Plazas

- Vegetative Emphasis on aesthetic quality
- Ecologically-conscious specimen plantings
- Diversity of species
- Mixed textures and growth habits
- Potentially both canopy and/or understory trees

General Vegetative Selection Criteria:

- Maintain palette consistency with Belmont Bridge Project
- Adhere to Charlottesville Master Tree List
- Adhere to Streets That Work Guidelines for plantings
- Tough, rugged, not susceptible to drought
- Tolerant of salt, roadway and urban environments
- Not shallow-rooted
- Ecologically Sensitive (native where possible)
- Historically Significant (where achievable)
- Disease-resistant
- Seasonal interest
- High aesthetic quality
- Provide psychological benefits

Urban Design – Potential Site Furnishings and Materials



Scored Concrete- City Standard: Omaha Tan Color*



Scored Concrete Crosswalks Bordered with High Visibility Striping,
*CityMix 'Omaha Tan' Color Concrete



High Visibility Crosswalk Striping
City Standard Crosswalk Treatment



Landscape Forms- FGP Backed Bench



Forms and Surfaces-
Dispatch Trash Receptacle



Landscape Forms- MultipliCITY Bike Racks

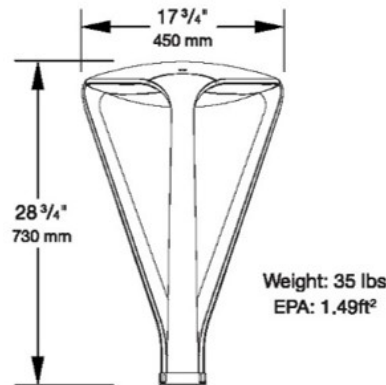
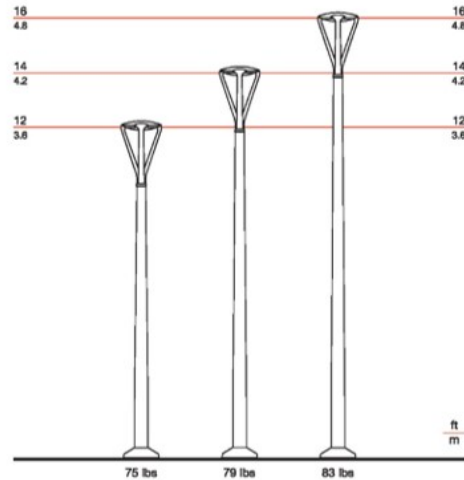
NOTE:

1. All Site Furniture to receive a Dark Gray finish.
2. The current intent for the East High Streetscape project is to use the same Site Furniture family as the Belmont Bridge project.
3. Furnishings were approved by BAR in August of 2018 as part of the Belmont Bridge approval process

Urban Design – Potential Site Furnishings and Materials



Landscape Forms FGP Pedestrian Light



NOTE:

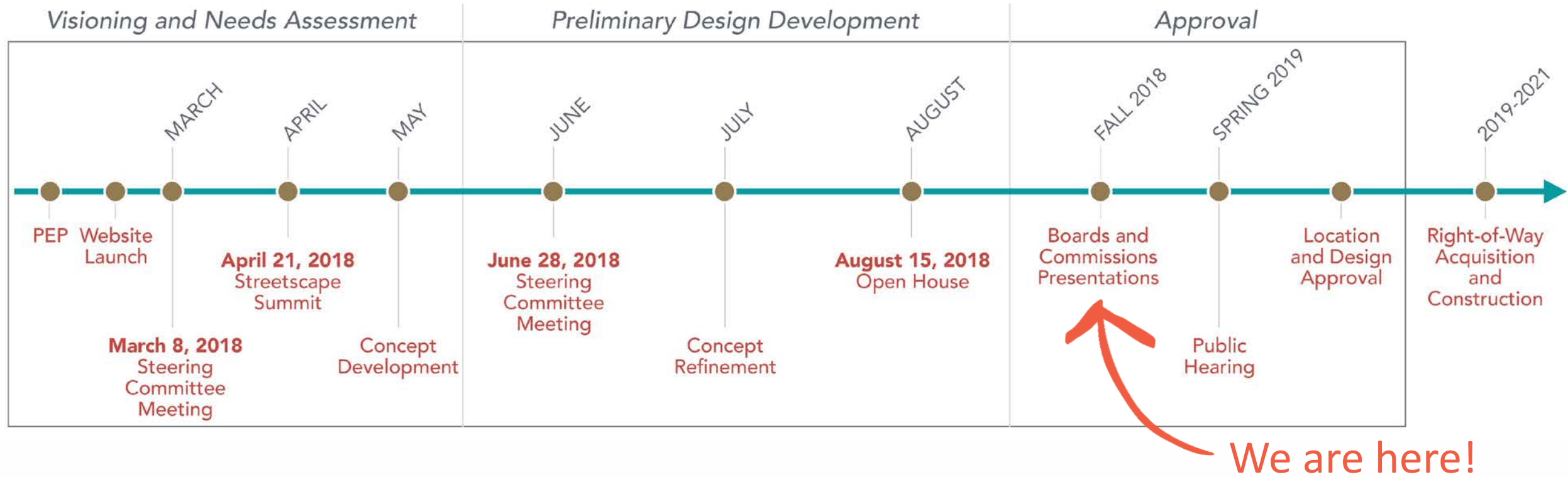
1. All Site Furniture to receive a Dark Gray finish.
2. The current intent for the East High Streetscape project is to use the same Site Furniture family as the Belmont Bridge project.
3. Light fixture was approved by BAR in October of 2018 as part of the Belmont Bridge approval process



Next Steps



Next Steps





Thank You!

Questions?

November 8, 2018

