

Delay, Level of Service (LOS), and Maximum Queue Length

Queue Direction
Northbound Southbound Eastbound Westbound
Delay reported in seconds per vehicle

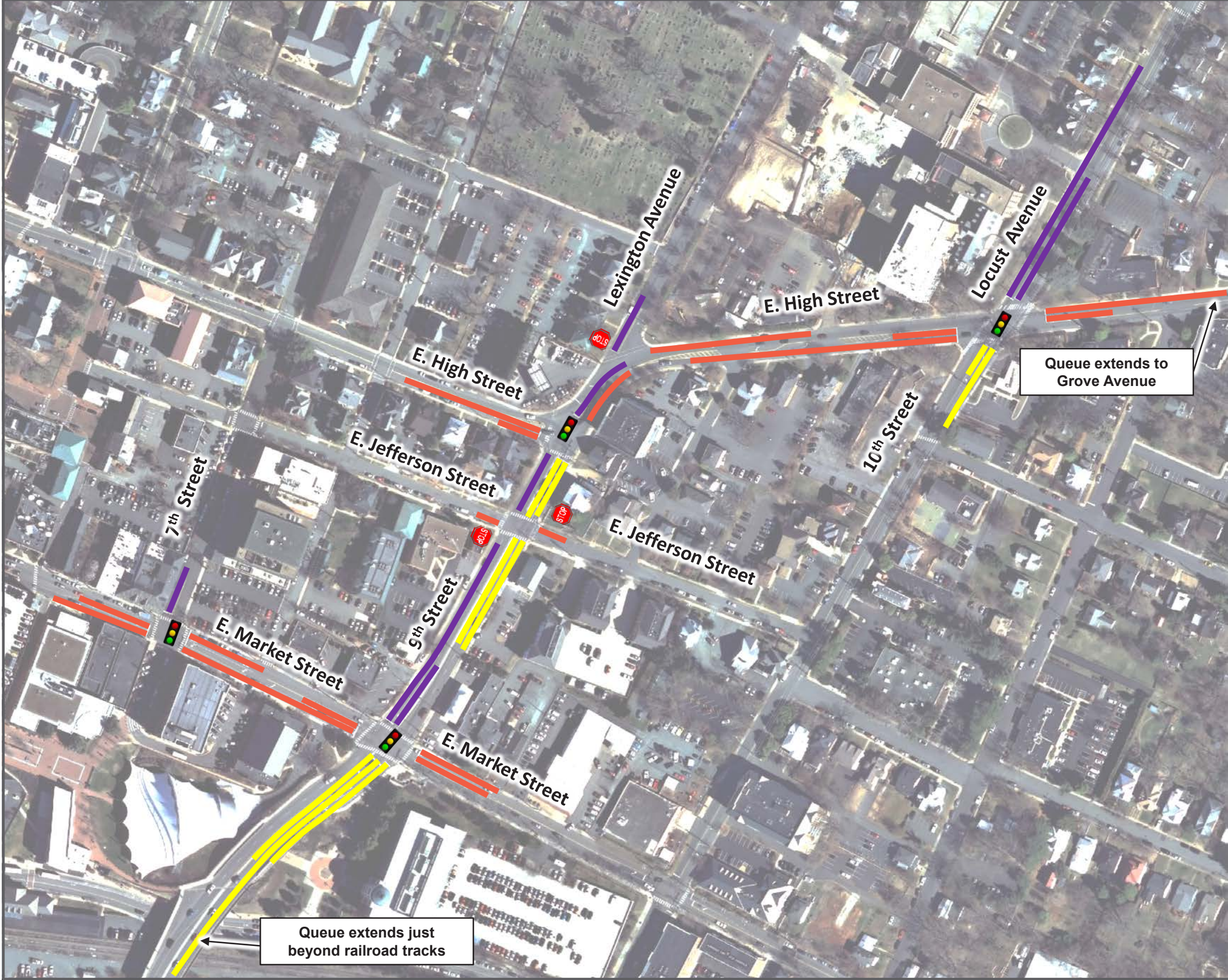


2041 No-Build (AM Peak Hour)



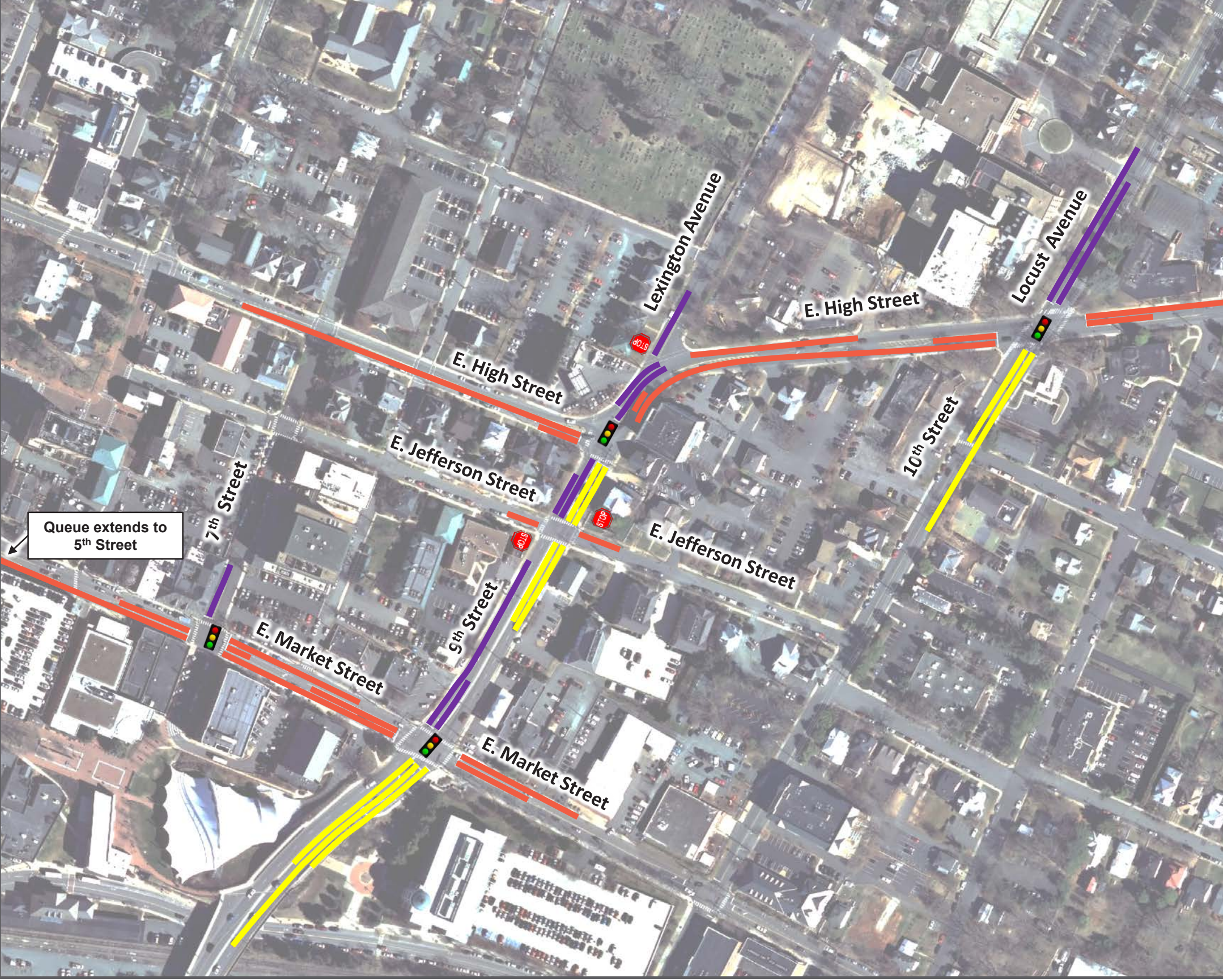
7TH STREET AT E. MARKET STREET Intersection Delay: 8.0 Intersection LOS: A	9TH STREET AT E. MARKET STREET Intersection Delay: 26.5 Intersection LOS: C	9TH STREET AT E. JEFFERSON STREET EB Delay: 21.3 WB Delay: 26.6 EB LOS: C WB LOS: D
9TH STREET AT E. HIGH STREET Intersection Delay: 11.8 Intersection LOS: B	E. HIGH STREET AT LEXINGTON AVENUE SB Delay: 15.3 SB LOS: C	10TH STREET AT E. HIGH STREET Intersection Delay: 30.4 Intersection LOS: C

2041 Design Alternative (AM Peak Hour)



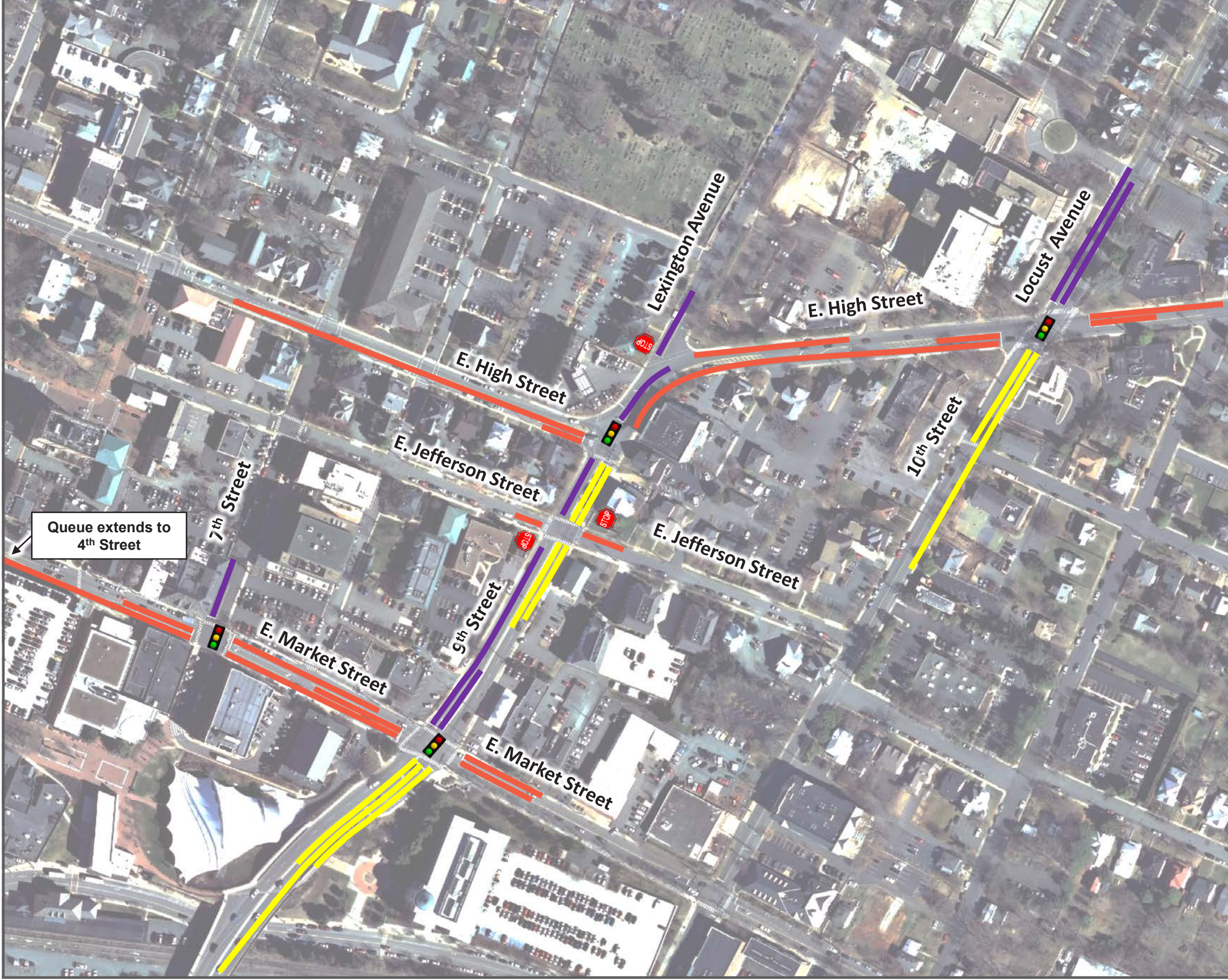
7TH STREET AT E. MARKET STREET Intersection Delay: 8.0 Intersection LOS: A	9TH STREET AT E. MARKET STREET Intersection Delay: 26.8 Intersection LOS: C	9TH STREET AT E. JEFFERSON STREET EB Delay: 21.9 WB Delay: 27.1 EB LOS: C WB LOS: D
9TH STREET AT E. HIGH STREET Intersection Delay: 19.7 Intersection LOS: B	E. HIGH STREET AT LEXINGTON AVENUE SB Delay: 13.3 SB LOS: B	10TH STREET AT E. HIGH STREET Intersection Delay: 37.2 Intersection LOS: D

2041 No-Build (PM Peak Hour)



7TH STREET AT E. MARKET STREET Intersection Delay: 9.2 Intersection LOS: A	9TH STREET AT E. MARKET STREET Intersection Delay: 29.7 Intersection LOS: C	9TH STREET AT E. JEFFERSON STREET EB Delay: 17.5 WB Delay: 21.7 EB LOS: C WB LOS: C
9TH STREET AT E. HIGH STREET Intersection Delay: 17.1 Intersection LOS: B	E. HIGH STREET AT LEXINGTON AVENUE SB Delay: 20.3 SB LOS: C	10TH STREET AT E. HIGH STREET Intersection Delay: 30.3 Intersection LOS: C

2041 Design Alternative (PM Peak Hour)



7TH STREET AT E. MARKET STREET Intersection Delay: 9.2 Intersection LOS: A	9TH STREET AT E. MARKET STREET Intersection Delay: 30.0 Intersection LOS: C	9TH STREET AT E. JEFFERSON STREET EB Delay: 19.5 WB Delay: 26.0 EB LOS: C WB LOS: D
9TH STREET AT E. HIGH STREET Intersection Delay: 21.8 Intersection LOS: C	E. HIGH STREET AT LEXINGTON AVENUE SB Delay: 12.7 SB LOS: B	10TH STREET AT E. HIGH STREET Intersection Delay: 34.4 Intersection LOS: C

