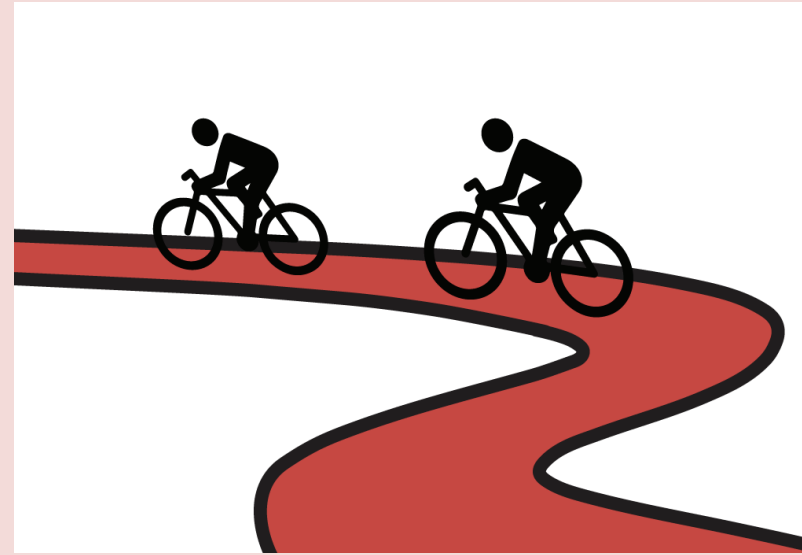


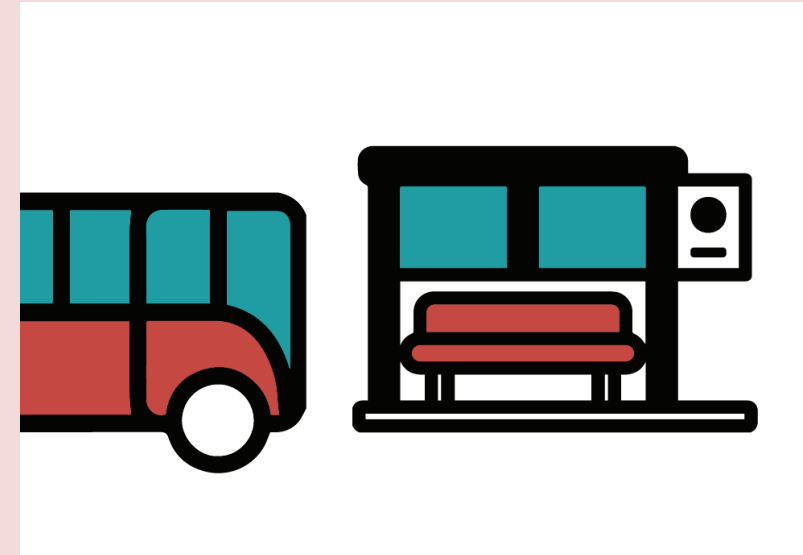
Streetscape Priorities

Bicycle Facilities



The design should enhance the safety of bicyclists, regardless of the bicyclist's skill level or reason for making the trip.

Bus Stops & Amenities



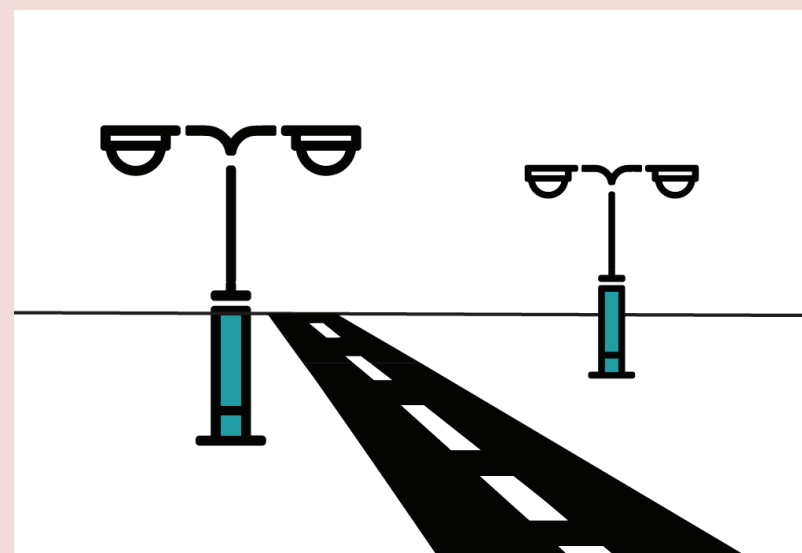
The design should make transit safer and more convenient by improving bus stops along the corridor.

Landscaping



The design should integrate green elements, including street trees, planting strips, and medians where possible.

Lighting



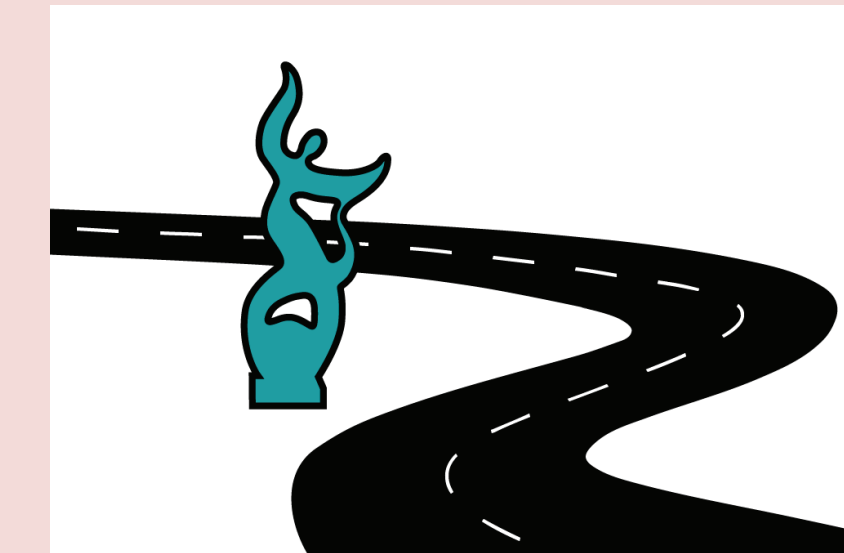
The design should feature enhanced lighting that helps define the corridor character, contributes to safety, and minimizes the brightening of the night sky.

Pedestrian Facilities



The design should provide a safe, comfortable, and enjoyable pedestrian experience when walking along or across the corridor.

Public Art & Branding



The design should uniquely identify the corridor and adjacent neighborhoods through the coordinated use of public art and branding.

Signage & Wayfinding



The design should offer visual cues to all users (motorists, bicyclists, and pedestrians) about nearby destinations.

Traffic & Travel Times



The design should move vehicular traffic safely and efficiently along and across the corridor.